



## Inside



**Nuffield scholar, farming high achiever, the colourful Don Harvey will be much missed. Page 5**



**Dux Dinah Symons, Opunake High School prizewinning, pages 7, 20, 21**



**Milestone for Geoff. Page 9**



**Joe's gigantic log splitter. Page 24**



**Vintage British comedy Vicar of Dibley brought to the stage, See What's On. Page 29.**

# Stratford cases a wakeup call

The huge queue of cars which stretched from Borell Avenue and down Tukapa Street the morning after the cases of the deadly delta variant of Covid-19 were found in Stratford showed many were unnerved by the fact that Covid has reached Taranaki and were keen to be vaccinated and tested.

"It's having a desirable effect from the vaccine point of view," remarked Derek Hosking, the owner of New Plymouth Motorcycles. It had certainly brought a change in the attitude of those who were of the mind set "It's never going to happen to me," he added. For Kent Helm, enjoying a Friday night drink at the newly opened Rahotu Tavern, the fact that the delta variant of Covid 19 was now in Taranaki was "a concern".

He added though "If they're going to continue to open the borders where Covid is rife it's going to spread to the smaller communities. The sooner people get vaccinated, the better, he continued adding "We're not going to beat it," and it was only a matter of time before it got here.

For Darell Henwood, also at the Rahotu Tavern, it was a wakeup call. "We thought our little island at the bottom of the world" was immune. He also made the point : "If our Government put more time into trying to eradicate it, than preparing for it," we'd have been better off.

He stressed the importance of getting vaccinated. Others however thought it was inevitable the highly contagious virus would make its way down to Taranaki from Auckland. "I expected it months

earlier" said Jason Allan who, with wife Belinda, own the Rahotu Service Station. Belinda added she was worried for customers being at risk and said they would be requesting that people wear masks and would be serving petrol themselves

to minimise contact. Cindy Baldwin from Brighten Feed Barn at Omata said she wasn't worried. Her business, an essential industry which she runs from her farmlet on the main South Road, said she'd actually doubled her sales during

lockdown so wasn't worried about the possibility of future lockdowns. People were able to pay online and then could collect the animal feed she sells from her onsite shop anytime, so it was pretty much business as usual.



**Cars of nervous people in New Plymouth queuing to be vaccinated at Taranaki Base Hospital on the morning after cases of the deadly delta variant were found in Stratford.**

# Now's the time to get vaccinated

The governance group of Taranaki Civil Defence Emergency Management, the 'Joint Committee', is urging all remaining eligible Taranaki residents to get their Covid-19 vaccination. Tom Cloke, the chair of the Joint Committee, says now that Taranaki has positive Covid-19 cases in the community, there has never been a more crucial time to get vaccinated.

"Getting vaccinated is something we can all do to protect ourselves, our families, and those around

us," says Mr Cloke. "We know that being vaccinated lowers the risk of serious illness and overloading our health system, and is the pathway to having fewer restrictions on businesses and our social lives.

"The Pfizer vaccine is a safe and proven way to reduce the impacts of Covid-19. We urge those who have not had a first dose to do so for the good of their communities, particularly our most vulnerable.

"With Covid now likely

here to stay in Taranaki, we need to all pull together and focus on what we can control to keep ourselves and our communities safe. High rates of testing and vaccinations are now vital for keeping the current outbreak under control.

"It is promising to see Taranaki's overall vaccination rates lift, with first doses passing 87% and second doses hitting 75%. The Taranaki DHB, Māori healthcare providers, and Iwi partner providers are working hard to reach the

more isolated and hesitant communities.

"The Joint Committee acknowledges the significant contribution that Ngāti Ruanui Healthcare, Ngāruahine Iwi Health Services, and Tui Ora have made to reach their communities.

"At Civil Defence we often talk about preparedness and resilient communities. Getting vaccinated is a simple yet powerful action we can all take to make Taranaki more resilient," says Mr Cloke.

The Joint Committee is made up of the mayors from the New Plymouth, Stratford, and South Taranaki District Councils, with representation from the Taranaki Three Waka (Aotea, Kurahaupō, Tokomaru).

The Joint Committee governs the Taranaki Civil Defence Emergency Management Group's planning and activities, and ensures the region is prepared to respond and recover from emergencies in the Taranaki region.

# Ten thousand jobs for Tui Ora

On November 6, health provider Tui Ora reached the milestone of delivering 10,000 COVID-19 vaccinations. Of these, 5,879 have been first doses, with the remainder second doses.

"There has never been a better reason to get vaccinated," says Tui Ora chief executive Hayden Wano. "With the detection of Covid-19 in Stratford wastewater this week it is possible we have undetected community transmission."

"The vaccine remains our best protection against serious illness from the virus so we are encouraging all whānau not to delay."

For Whānau Ora General Manager, Tamara Ruakere the milestone reflected the hard graft of Tui Ora kaimahi but there was no reason to be



**Tui Ora kaimahi Tamati Neho (left) and Toni-Ann Bekemans in charge of the observation area at the Tui Ora vaccination clinic at Onuku Taipari Domain in New Plymouth.**

complacent: "We know that the majority of people in Aotearoa suffering from Covid 19 right now are Māori, followed by Pacifica. These are two of the ethnic groups most vulnerable, so the job is not done yet.

"If we want to reach our vaccination goal we need to be vaccinating at least 1,500 Taranaki Māori each week between now and the end of the year.

"It's a massive task but we are working really hard with iwi, Te Aranga and the TDHB to boost Māori vaccination rates."

Tui Ora Clinical Nurse Leader, Robyn Taylor emphasised the need for testing:



## Letters to the Editor

Send your your views to:  
**Letters to the Editor**  
 23 Napier Street, Opunake.  
 Fax: (06) 761 7016

email: [editorial@opunakecoastalnews.co.nz](mailto:editorial@opunakecoastalnews.co.nz)  
 You are welcome to use a pseudonym but must supply your name and address to us.

**“Let’s create your business growth strategy together”**  
 Your only local community accounting firm



**HUGHSON & ASSOCIATES**  
 Accounting for the future, today  
**Hawera - Opunake - Patea - 06 278 4169**  
 Opunake Office hours:  
 Mon & Thurs: 9am-3pm, Wed: 10am-3pm

## RENTAL VEHICLES



- CHARTER BUSES
- VANS
- TOUR BUSES

### ALUMINIUM SCAFFOLDING FOR HIRE

\$35 per day, \$50 weekend.  
 More than 6 days \$30 per day.

### WATERBLASTER FOR HIRE

Petrol 3000 psi 15L/minC  
**Cost: Half day \$90, Full day \$120, Weekend \$130. Friday after 3pm return Monday 9am.**  
 Bond for waterblaster and scaffolding \$50.  
 For more information contact Tracey or Christine at

## PICKERING MOTORS

11 TENNYSON ST OPUNAKE PH (06) 761-8363  
 0800 22 11 20 Email: [pickering.motors@xtra.co.nz](mailto:pickering.motors@xtra.co.nz)

# OPUNAKE & COASTAL NEWS

Registered office: 23 Napier Street, PO Box 74, Opunake  
 Phone: Office (06) 761-7016, A/h (06) 761-8206  
 For advertising, email: [ads@opunakecoastalnews.co.nz](mailto:ads@opunakecoastalnews.co.nz)  
 For editorial, email: [editorial@opunakecoastalnews.co.nz](mailto:editorial@opunakecoastalnews.co.nz)  
 For accounts, email: [accounts@opunakecoastalnews.co.nz](mailto:accounts@opunakecoastalnews.co.nz)  
[www.opunakecoastalnews.co.nz](http://www.opunakecoastalnews.co.nz)  
 Editor: Bernice McKellar  
 Journalists/Sales: Rolland McKellar, Bryan Kirk  
 Advertising/Production: Vanessa Smith  
 Production/IT: Shane Butler  
 Delivery: Thursday, fortnightly  
 Registered as a newspaper.

Member of the Community Newspapers Association of New Zealand



The Opunake and Coastal News is distributed free to every home and business within the rural area bounded in the north by the New Plymouth city border, extending east to Egmont Village, and around to the edge of Stratford, south to the Hawera city border and inland to Kaponga and through Eltham.

*While we welcome free speech, the views expressed in the Letters to the Editor do not necessarily reflect those of the Opunake & Coastal News. Please limit letters to 350 words as we sometimes struggle for space to fit them all in.*

## Many events cancelled

Not only has the Stratford A & P Show been postponed, the 138<sup>th</sup> Egmont A & P Show has been cancelled along with the Taranaki Art Awards being cancelled, but also our city and town’s Christmas parades and the annual mid-afternoon Christmas Concert at the Bowl of Brooklands has also been cancelled because of this virus.

But all is not lost, as it seems that next year’s WOMAD at the Bowl of Brooklands will go ahead, but it’s going to host some of our unknown New Zealand talent, as normally we would see many more overseas artists, but not next year because of this virus, which will give these unknown talents the chance to perform at our fabulous outdoor venue.

So the rules are that every entertainer, backstage crew, sound people, management, and those people wanting to see WOMAD in action must all be vaccinated twice, otherwise there will be no entry for those who haven’t been vaccinated, which to me is fair.

We are so lucky to have such an outdoor venue as the Bowl of Brooklands, as in the past, many upon many top line artists like Kenny Rogers and the First Edition, the Little River Band, Johnny Farnham, Solomon Lang, the Seekers and many more top line artists.

*Tom Stephens  
 New Plymouth*

## COVID vaccine

To Mr Landers (Letters 4/11/2021 ).It gains nothing by insulting fellow countrymen just because they

have concerns about mRNA vaccine safety. Why is it that people like yourself with such a self-imagined superior level of intellect always feel they have some sort of God-given right to lecture and belittle anyone who disagrees with them? And please, enough with the conspiracy theory nonsense because that derogatory phrase means absolutely nothing. It’s merely a label thrown about whenever an authoritarian narrative is questioned.

Firstly, you seem quite accepting about our society being segregated based on who has and hasn’t allowed the government to inject them with this experimental “vaccine” - for a supposed respiratory disease that’s said to have a 99.77% spontaneous recovery rate across the board (Ionnadis) no less. I personally think forced apartheid at any time or for any reason is disgusting and anybody with a brain around the right way should be outraged at this. But not you.

Secondly, if you honestly believe that “credentials” are needed before people’s views can be taken seriously then, well, how can you be taken seriously?

Thirdly, you state these vaccines are “safer than all others combined.” Now c’mon Mr Landers - with four degrees are you really unaware that officially documented adverse reaction figures clearly show there’s been more injuries and deaths associated with these mRNA injections than all those other vaccines combined for the last 30 years? Or that those numbers, in just the US, EU and England, already total hundreds and hundreds of

thousands? And if you couple that with generally only 1% of all adverse reactions - many of these mRNA ones being life changing and irreversible - even being reported (Lazarus report) then I’d say “safe” is an extremely brave word to even be using at all. No vaccine in history has caused this much carnage and still been left on the market.

Ultimately, people must decide whether the benefit of being jabbed outweighs the risks and that decision is entirely theirs’ to make. And whatever that may be Mr Landers you need to respect it.

*A Concerned Kiwi  
 Eltham.*

## Co-incidence theory

Those reading the history and progress of ‘propaganda’, know we live in a world of truly great conspiracies, where inspection and contest, leading to resolution of any one of them, will be filibustered. That those secrets pattern our society, and are kept by powerful and complex self-interest. Dissent is all but silenced by ad hominem attack and the general inability of ‘the people,’ to believe it possible.

As is quoted by the great Australian Journalist John Pilger; “In the 1970s, I met Leni Reifenstahl, close friend of Adolf Hitler, whose films helped cast the Nazi spell over Germany told me that the message in her films, the propaganda, was dependent not on “orders from above” but on what she called the «submissive void» of the public. «Did this submissive void include the liberal, educated bourgeoisie?» I asked her. «Of course,» she said, «especially the intelligentsia.... When people no longer

ask serious questions, they are submissive and malleable. Anything can happen.”

Evidence of intent, by EcoHealth Alliance, to enhance (weaponise) normally non transmissible-to-human viruses; found in the bat caves of Yunnan; exists. Evidence of joint US Chinese ‘gain of function laboratories, linking Chapel Hill, Fort Detrick and Wuhan to that enhancement - exist. That ‘they’ were working on the *same virus ‘line’* now circulating the world as covid; is known to science. These are not theories. They point to Bio-weapon research and release. In light of that; Concerns surrounding the resultant use of otherwise unauthorised and experimental medicines, called vaccine; are very real.

We are about to acknowledge the 59th commemoration of John F Kennedy’s murder in Dallas in 1963 by the CIA as proven in a Court of Law in Miami in 1985 (Hunt vs Spotlight) Odds are 9 / 1, that mainstream media will continue the Warren Commission deception, as the undeniable truth.

And any contest of that ‘truth’ will be prefaced as conspiracy theory and anybody questioning it a conspiracy theorist.

In which case, I don’t mind being called one.

*Roger Morris  
 Oeo*

## Work still to do

As of November 2021 some progress has been made to the Department of Conservation, Pouakai and Taranaki Crossing Treks upgrade projects since 2017, and this month the department has finally allowed the general public

## Deadlines for copy

We find we are working very late on a Tuesday night to put the paper together for it to be at the printers first thing Wednesday morning.

Our deadline for copy is Monday 10am. This gives us an opportunity to proofread the copy. We continue to receive a lot of material on Tuesday and are struggling to process it all as well as put together the paper. If you have trouble meeting this deadline can you let us know.

This deadline does not apply to the Cops and Fire Service columns where incidents can occur on the Monday and Tuesday.

We do appreciate your contributions, so thank you in advance for your co-operation.

*Editor*

### Opunake & Coastal News Paste Up Night



## More Opunake & Coastal News’ out

We have printed more copies of the Opunake & Coastal News.

It is available on stands at the following locations

- New Plymouth:**  
 Ate Forty One, Tukapa St, Westown  
 Challenge Spotswood  
 The Health Shop on the ground floor at Centre City  
 The Store, Cnr Tukapa St & Wallath Rd
  - Waitara:**  
 Outside the North Taranaki Community House Trust, 67 McLean St
  - Inglewood:**  
 Inglewood Book Centre, 31 Rata St
  - Stratford:**  
 Stratford Knit & Sew, 202 Broadway
  - Hawera:**  
 Outside First National, Cnr of Victoria and High Streets  
 Outside Nursery Rhyme, 158 High St
- Papers are also available at**  
 The Sunshine Dairy, Hawera  
 The Normanby Dairy  
 Swetes Dairy, Manaia  
 Pastimes in Opunake  
 Farm Source, Pungarehu  
 Tim’s Barbershop, Moturoa  
 Okato Takeaways



## Letters to the Editor

Continued from page 2

community the exciting upgrade projects. Serious work upgrade work is on the way. This leaves only one year left to complete these projects, which still leaves project infrastructures of the swing bridge at the Manganui Gorge access, the extension to the Pouakai Hut, the Boomerang Slip access crossing and the upgrade of the North Egmont Visitors Centre displays, without mentioning public toilet facilities at Dawson Falls.

Ian McAlpine  
New Plymouth

## Remembering Sean Wainui

It was bad enough when our Taranaki rugby Union heard the announcement from the New Zealand Rugby Union that there wasn't going to be any promotion/relegation rugby played this year because of this virus, but then came the terrible news that former Taranaki rugby player Sean Wainui had died in a tragic car accident near Tauranga aged only 25.

At 18, it seems Sean was

contracted by our Taranaki Rugby Union, played 53 games and played his club rugby for New Plymouth Old Boys between 2014 and 2020, plus he played for the Chiefs rugby franchise under coach Neil Barnes, and this year transferred back to Bay of Plenty and also represented the New Zealand Maori All Blacks.

I've no doubt that he'll be sadly missed by many rugby players, fans and supporters and other people he came in contact with, as he has left a wife, two children, and their wider whanau, while at the same time I've always wondered why such things happen to promising sports people, as one remembers Jerry Collins, a former All Black who was killed in a car accident.

Many upon many tributes have been made about Sean, as one day he could have been an All Black, so I do hope that he was a good role model for our young and up-and-coming Maori sportspeople regardless of their gender to be inspired by.

Tom Stephens  
New Plymouth



## Cancel culture

It was a good editorial in the last issue mentioning the criticism you get for publishing "unpopular" narratives and not caving on to undemocratic American

style cancel culture. Voltaire, albeit a rabid atheist, defended the right of Christians to evangelise.

Citizen against cancel culture.

## Ten thousand jobs for Tui Ora

Continued from page 2

"Even if you only have mild cold symptoms you should get a test - and stay at home until you get the results of the test."

"Testing is the best way for us to find cases. Once a case is identified contact tracers can try and reach the people who may have been exposed."

Robyn and her team of vaccinators and administrative staff have been on the frontline of the campaign for several

months now and says: "We know that some people are concerned about getting the vaccine but we encourage them to come along to one of our clinics anyway. We have clinically trained staff who can give you advice and information about the vaccine."

"We've had some people just come in for a kōrero and then go away and think about it, maybe do some more research and then they come back and tell us they are ready."

## Signs of Covid



No mask, no entry, the message in many businesses.

## ADELPHOS

Who are you trying to impress and seek approval from in your life? On Facebook there's a thumbs up "like" button to show approval of a message. Our culture seems to feed a growing need for approval, especially among our youth. Most approval anxiety problems can be boiled down to the core question: Who are you trying to impress?

People have a natural desire to want approval and acceptance. It feels good. However, the problem with an obsessive need for approval is that it can result in feeling anxious, depressed

## Approval addiction anxiety

or sad. Many studies show that such negative affects impact on our emotional life and the quality of family and other relationships. Life can become too stressful.

The causes of approval anxiety can vary from past traumatic events such as emotional, physical, sexual and verbal abuse to low self-esteem, workplace performance worries or parental pressure to please. In too many cases such approval seeking can lead to severe depression and suicidal thinking. In today's internet age of post-covid-19 anxiety, approval addiction

anxiety puts our youth at an even greater suicide risk. A recent UNICEF report has ranked New Zealand as the highest youth suicide rate for 15-19 year olds among 41 OECD and EU countries. Shocking, eh?

Yes, it's important for young people and adults to receive constructive criticism. But our self-identity is too precious to be dictated by someone else's opinion. Realistically, everyone is not going to like or approve of you (or me). I cannot emphasise enough, whether you believe in God or not, another person's

approval or disapproval should never define you.

As human beings we are all challenged by different degrees of needing affirmative approval. But now let's go back to the core question, "Who are you trying to impress?" Do you want to impress yourself, God or others?

So when you step out of bed each morning who are YOU trying to impress?

Manaakitanga.

Adelphos

## On this month in history: David Gray kills 13 at Aramoana

On November 12, 1990 David Malcolm Gray shot dead 13 people at Aramoana, a coastal town (near Dunedin). The victims included Stu Guthrie a policeman from nearby Port Chalmers. The 33-year-old was unemployed and

described as a loner with a fascination with guns. He set fire to the next door house of his first victim Gary Holden having also killed his (Gary's) daughter and her school friend. Several of his victims were children.

The police searched for Gray over the next 24 hours when he was located in a nearby house on November 14. He opened fire and wounded a policeman, but was shot dead as he emerged from the house demanding

(with obscene language) that the police shoot him.

This was New Zealand's worst mass killing in peacetime, until the terrorist massacre in Christchurch.

## Correction

This photo was incompletely captioned in our last issue. It should have read. Crystal Jordan won Supreme Champion with her lamb Marley, with Judges Kane Barrett and Bruce Thompson. The Opunake and Coastal News apologises for the error.

The next issue of OCN is December 2, 2021.  
Phone  
(06) 761 7016  
to be in it.

Coastal Welders

027 255 8677  
06 752 8138

- Machinery Repairs
- 3.5 Ton Crane Truck
- Structural Steel, Stainless & Alloy Fabrication
- Turret Punching, Plate Shearing & Notching
- Large Bed Heavy Press
- Alloy Welding
- Digital Heavy Duty Lathe
- Cowsheds
- Crane Hire
- Fitting & Turning
- Keyway Cutting & Broaching

We supply bearings, steel, fasteners, chain and general engineering supplies.  
Also hydraulic hoses, fittings and crimping.

We are a local company training local people.

Email us at [coastalwelders@xtra.co.nz](mailto:coastalwelders@xtra.co.nz)

WAREA

## Michelle Hofmans

027 531 7684

VERY PROFESSIONAL

Michelle has been very professional and caring, especially when our dad passed way.

Verified by ratemyagent

Giving your property its best shot!

firstnational  
REAL ESTATE  
Collective®

Licensed REA 2008



Taranaki wide sales, hire and service. Free delivery, competitive prices.

**MOBILITY SCOOTERS and all living aids - we'll help you with whatever you need.**

**Kevin & Marilyn Bromell**  
**154 PRINCES ST - HAWERA**  
Ph: 06 278 8072 - Freephone 0800 765 763  
[www.mobilityandmore.co.nz](http://www.mobilityandmore.co.nz)



*Simple But Significant*

a simple cremation & burials

Helping Taranaki families with a range of simple, professional funeral services. With affordable caskets, urns & jewellery.

**0800 236 236** 233 Carrington St  
[www.asimplecremation.co.nz](http://www.asimplecremation.co.nz) New Plymouth

You can rely on us for your energy needs

[www.rockgastaranaki.co.nz](http://www.rockgastaranaki.co.nz)



**Transform your home** - all your hot water, space heating and cooking needs from your trusted local Rockgas supplier.

**Count on us** - reliable delivery of 45kg LPG cylinders to your home, business, or farm where ever you live.

Locally operated and proud to be part of your community



Call Rockgas Taranaki  
**0800 LPG 2 YOU or 06 757 9264**

# Ronald Hugh Morrieson Literary Awards 2021 winners of the Open and Secondary Schools Poetry categories

## Hanging on a Wire

Out Tanga 1 deeds chop words  
into the ring of life  
battened to fenceposts  
like dried bones of old men  
hanging in the sou-wester;  
Whiskered, bleached grey, pinched to a staple  
the heartwood's solid and true.  
In the window he waits, remembers  
stomping hoof, panting heat, yards shimmering  
'til every edge broke to a whistle  
to a voice, to fragmented colour,  
to a dash of legs across fleece and rail  
to barking shade of willow and trough;  
when he sang banjo with Doug on a goods-train  
shunting soot into words of war on his lap,  
When he waltzed talcum on a penny  
round Jenny, sipped dandelion wine  
from a burlap outback.  
Now, 93, sunk to his ears  
stooped like a bird  
clasping a Zimmer-frame  
he shuffles down the drive  
stopping occasionally to study puddles  
and the movement of clouds.

1 Abv: Tangarakau: a district east of Stratford  
*Stuart Greenhill*  
Winner Open Poetry Category



Stuart Greenhill.



Jacob Taylor.

## Love, actually

i wanna stay here forever, prowling under the pale flickering street lights of manaia at dusk  
forever star-gazing, people watching  
the chorus of our bike chains clicking as we grind the gears  
can we stay here forever?  
can we please stay, melting our bodys onto scorching concrete in summer, speckled with salt spray  
Drawing genitals on high school hallways and smoking in the bathrooms  
before love consumes us both  
counting down the days till love fractures the power of our teen years  
so lets bike through the mellow yellow catacombs of our town  
fueled by the uncertainty of adulthood and fear of death  
now here i sit, writing this love letter to my youth  
one final farewell to 15 as the clock ticks over to 16

*Jacob Taylor. Hawera High School*  
Winner Secondary Schools Poetry Category.

### INSTALL RETRACTABLE INSECT SCREENS FOR A BUG FREE, SPRAY FREE HOME



Window handles, seals, hinges & stays • Security locks for windows & doors  
Sliding and bi-fold door rollers, locks & handles • Retractable insect screens

Local family business servicing Coastal Taranaki



Call free anytime **0800 37 37 10**  
[www.exceed.co.nz](http://www.exceed.co.nz)

## CRAWFORD

### AGRITECH Ltd

- TRACTOR & MACHINERY SERVICE & REPAIRS
- ON FARM SERVICING
- AIR CONDITIONING SERVICE, REPAIRS AND HOSE MAKING
- SPARE PARTS & FARM OILS
- IMPLEMENTS & ATTACHMENTS - SALES AND SERVICE
- FACTORY TRAINED TECHNICIAN
- TARANAKI & WANGANUI INDEPENDENT FERGIE TRACTOR SPECIALISTS

Ph **06 762 8023**  
Ian Crawford  
Mob **0272 207 701**

MASSEY FERGUSON | FORD | SAME | LANDINI | ISEKI | VALTRA | MATBRO  
INTERNATIONAL | MERLO | DAVID BROWN | RENAULT | URSUS | JOHN DEERE

### MORRIS LUBRICANTS

the winning formula since 1869

# OBITUARY Donald James Harvey

## 24/10/1936- 27/10 /2021

Don Harvey a leading dairy industry farmer in Coastal Taranaki passed away on the 27th of October 2021 after a long battle with the effects of a stroke some years ago.

The son of Alex and Doreen Harvey of Oaonui, Don started work in dairying when he left school to help his crippled father on the family dairy farm. This was after finishing School Certificate at Opunake High School. That started his long career in dairy farming. He added to this by becoming very active in the Rahotu Young Farmers Club which had a strong debating team, along with the likes of Jim Bolger. Don married the love of his life Margaret Crosky then the home craft teacher at Opunake High School. Their courtship at the time was the gossip of the school, where Don's blue Morris Minor was frequently seen.

Don and Margaret purchased a bush-covered farm on the Upper Parihaka Rd and proceeded to develop this into the leading farm that it is today. This formed the base for the investment in a further three farms. In later years in partnership with his son Keith, he established several goat dairy farms.

They raised their family of four in a small farmhouse before building a new home as the farm prospered.

In 1967 as a result of Don's Young Farmers' activity, he won a Nuffield Farming Scholarship to study Dairy Beef in the UK with Margaret. It was a six-month trip while his extended family minded the farm and family. Don has enjoyed the strong collegial group that developed with other Nuffield scholars, and they continued to meet over the years.

Don's farming achievements and involvement in the Industry were many.

- He was a winner of the Young Farmers Club Young Farmer of the Year.
- The first Taranaki man to win one of Jaycees' Three Outstanding Young Men of the Year in 1971.
- Chairman of the



Don Harvey.

Dairy Section of Federated Farmers in Taranaki.

- Junior vice-chairman of the National dairy section of Federated Farmers.
  - Member of the Dairy Industry Council.
  - Member of the Taranaki Animal Diseases Advisory Committee.
  - Director of Taranaki Rural Traders..
- He was chairman of the district Public Baths Committee and was a committee member of the Pungarehu swimming club.

In 1992 Don was elected to the Board of Kiwi Dairy as the industry entered the mergers that finally gave rise to the formation of Fonterra. He was a constant critic of Fonterra over the years.

Don was a keen sportsman

playing rugby for High School and the Opunake Seniors. As an Opunake man, he was always a body surfer but became addicted to windsurfing which led to him investing in homes in Caloundra Australia and a resort with his son Keith in Fiji.

In 1995 he build his retirement beach house at Oakura where he lived until his death. Here he renewed his interest in Surf Life Saving, running a sponsorship project for new young members for many years. He also became part of the Handle group on Thursday nights at the Butler Reef Hotel.

Don was windowed in 2011

when Margaret passed away after a series of strokes.

Don is survived by his large loving family-sons Bruce, Keith, Stephen,

and daughter Wendy, their partners, Robin, Dell, and Annette, 13 grandchildren, and 17 great-grandchildren.

*The Harvey family.*

Sign Making • Vehicle Graphics • T-Shirts  
Logo Design • Business Cards • Building Signage

www.zodiacsigns.co.nz | 06 278 6224

**LOOKING FOR A REAL ESTATE PROFESSIONAL YOU CAN TRUST?**

Call **Viv Scott** today for help with buying, selling - or for a friendly, confidential chat to discuss your options.

**Viv Scott**  
M 027 441 4596  
E viv.scott@eieio.co.nz

**LAWYERS**

## OPUNAKE LAWYERS

# Thomson O'Neil & Co.

*Our Opunake Office is attended by:*

**Robert England on Wednesday & Fridays** for buying and selling houses, farms & businesses; Trusts, Wills and Estates.

**Mark Utting on Thursdays** for buying and selling houses, farms & businesses; Trusts, Wills, Estates and refinancing matters.

**FOR ALL YOUR LEGAL REQUIREMENTS**  
**30 TASMAN ST, OPUNAKE**  
**PH: 761 8823**

**OUR PEOPLE MAKE THE DIFFERENCE**

Proud to support Coastal families

**vospers**  
funeral services

06 759 0912  
257 Devon St East, NP  
vospers.co.nz

67 Breakwater Rd (up Norma's Way) • NEW PLYMOUTH • PHONE 06 751 5065  
FAX: 06 751 5085 • WWW.NEWTONGORDGE.CO.NZ

**ALL DOMESTIC & COMMERCIAL JOINERY**

• Kitchens • Stairways • Vanities • Lounge Units • Bench Tops • And More

# Burnoff gets out of control at Otakeho

A controlled burn-off on an Otakeho property took an unexpected turn and led to a fire callout on Thursday last week (November 11). The alarm had gone at about

3.30pm, and the Manaia Fire Brigade were first to respond. The Opunake brigade and the Rural Fire Service were then "tagged in" said Manaia chief fire



The Manaia and Opunake Fire Brigades and the Rural Fire Service attended a vegetation fire at Otakeho last week.

## Garage Doors Specialists



WINDOWS • DOORS • CONSERVATORIES

- Sectional, Roller, Tilt.
- Automatic Openers
- Repairs & Maintenance

Call for a Free Measure & Quote  
Email: sales@rylocknp.co.nz | Ph. 06 758 8073



### OUR SERVICES

SERVICING NEW PLYMOUTH AND TARANAKI WIDE

- HOME HEATING • DRAINAGE • PLUMBING
- ROOFING • GAS FITTING

Any job, we will get it done on time in budget

Call Us 06 765 5336  
Email Us info@savvygas.co.nz  
www.savvygas.co.nz



## POWERLINE FAULTS AND SERVICING

From a fuse or broken insulator replaced to a complete powerline rebuild

Call: **TOP OF THE LINE ELECTRICITY SERVICES**

Greg Lewis: 027 453 0326  
Justin Robinson: 027 445 9162

**Powerline Servicing Specialists**  
Free line inspections  
Free advice | Free quotes



officer Shane Taylor. "There had been a controlled burn-off earlier that day. The farmer had some trees that had been milled and was cleaning up some leftover branches The wind changed

and blew the fire into a gully and some scrub and into the neighbour's boundary hedge," says Shane. "We cut the fire off so it wouldn't go any further into the neighbour's property and

then extinguished it." He says this serves as a reminder to check the weather forecast before lighting fires.

"The dry season is coming

on. It's a reminder to anyone burning boxthorn that they need to be vigilant and check the weather forecasts before lighting fires. The wind can change in a couple of hours."

## Help Foodbank give cheer this Christmas

Due to health/safety procedures, with respect to Covid 19, the Opunake Foodbank is unable to do a Christmas Drive this year. Please help fill our shelves by donating items from your families, workmates, sports teams and clubs. We need tins of baked beans, spaghetti, fruit, breakfast



cereals, pasta, rice, toiletries and Christmas treats. Please bring to Coastal Care from Monday November 29 to Friday December 3.

Many thanks for your support

**LEFT:** Just some of the foods you can donate to help people in need this Christmas season.

## BRANDERSON HOMES LTD



### TRANSPORTABLE HOMES

Office, Show Room & Workshop located at **47 Hautapu Road, Cambridge**

branderson.homes@xtra.co.nz  
www.brandersonhomes.co.nz  
07 827 3901

## POWERWORX

Power Supply Rural & Residential

Design, upgrade and repair overhead and underground power supplies

- Powerco Approved
- Underbores - wires and pipes
- Powerline maintenance
- Fault repair
- Subdivision power installation
- Vegetation control around powerlines
- Network connections
- Transformer & line upgrades
- Specialists in rural power servicing and installation

**0800 877 746**

Taranaki Region  
Contact Bruce Wilson Manager  
58 Glover Road, Hawera Ph: 06 278 4514  
Email: powerworx@obertech.co.nz

# Growing good people for a rapidly changing world

It was inevitable that COVID would make its presence felt at this year's Opunake High School senior prizegiving ceremony. With Level 2 restrictions applying only students and staff could take part, although family, friends and the wider community could tune in to the livestream.

COVID was always going to present challenges, nevertheless the school had risen to the occasion, said school principal Andrea Hooper-Carr.

"This year has been a year of resilience and courage. To have that resilience we need something called inner strength to keep us going, and that has never been so important.

"To you, the students you exceeded your own expectations. You didn't exceed our expectations as we always knew you had so much potential. You held yourselves with mana, resilience, dignity and grace throughout this year when you could have folded under anxiety and the fear that the world is spinning out of control, but you haven't." Board of Trustees presiding member Liz Gasson said the school's academic results, particularly for Maori students continued to track ahead of the national average.

"Your achievements this year big and small, along with your positivity, friendliness and sportsmanship demonstrates that your dreams and values are alive and well. I encourage you to uphold them in all aspects of your life."

This year's Dux of the School is Dinah Symons. It was a time for farewells, with head prefects Madaline Symes and Pero Brophy heading off for Otago



Dinah Symons, Dux of Opunake High School.

and Waikato universities respectively.

Madaline paid tribute to the school's teachers.

"I walk away proudly, knowing that I was part of such great classes led by the best teachers in the world. All of you impacted my life greatly and made me passionate and excited to attend school every day.

"This kura has done what it aims to do, grow good people for a rapidly changing world."

Pero said the most important

question in life is "who are you?"

"I believe above all that is the most essential question. If you continually ask yourself this you will achieve well. Do not be defined by recognition from others, but by the fruition of your own positive actions."

The guest speaker at the prizegiving gave his presentation via video link. Media personality Tumehe Rongonui told the students that 20 years ago he had been in their shoes as a student at

Opunake High School. Since then he has been involved in TV, media and broadcasting for nearly 20 years. He recalled fronting up for a job interview as a teenager.

"I showed up when I was 16, with no shoes, just shorts, singlet and a guitar, that's it."

He says in everything he did his main aim was to make people happy. It was something which he said had been drummed into him by his parents who always believed in putting people first.

"What business really is, is fixing up other people's problems. You have got to understand that everything you do in life is about serving other people."

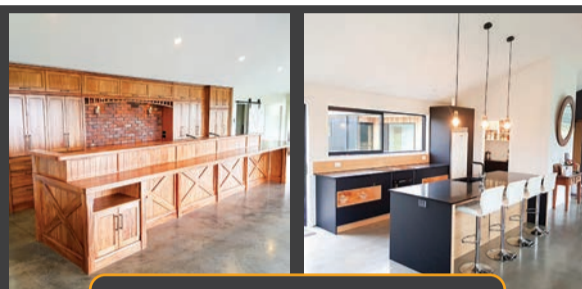
If while fixing other people's problems you found something that you are passionate about, that is the "sweet spot." You should also be prepared to "fail hard" as well, he said.

Promote your events in the

**OPUNAKE & COASTAL NEWS**

**Phillip Joblin**

**Kitchen & Furniture Cabinet Maker & Restoration Work**



We build new and restore old!!



3 Mawhitiwhiti Rd, Normanby, Taranaki

06 272 8174 or 021 0473 493

email: [ijjobs@outlook.co.nz](mailto:ijjobs@outlook.co.nz) | Facebook: @Pjoblin

## FARMERS .....

They've finally arrived

Suzuki DR200 Trojan

Kawasaki Stockman 250



Talk to Andrew today



Andrew Foot

**Kawasaki Mules back in stock. Pre order your kids bikes for Xmas NOW!**

New Plymouth Motorcycles has you covered.

Local and trusted for over 50 years!

**NPMC**  
New Plymouth Motorcycle Centre

06 758 4449 or 021 0274 5937  
58 - 63 Leach St, New Plymouth



Phone 06 761 8999—027 256 8083

Opunake's Biggest Range of Tyres



Come in and see us for a quote. We also stock a big range of batteries & automotive accessories.

38 Ihaia Road, Opunake

Email: [accounts@agrimec.co.nz](mailto:accounts@agrimec.co.nz)

### IHAIA MOTORS

for

A GRADE REPAIRS

- Tyres
- Batteries
- Lubes
- W.O.F
- Panel beating
- Painting
- Farm Bikes
- LPG
- All mechanical repairs
- Insurance work
- Radar Detectors

AT COMPETITIVE PRICES.

Tasman St, Opunake  
Ph (06) 761-8502

# Making sure Taranaki families aren't left behind

For almost two years now, protecting lives and livelihoods in the face of COVID-19 has been the number one focus of our Government. Thanks to our

strong response and to the hard work of the team of five million, we've seen fewer cases, fewer hospitalisations and fewer deaths than any other country in the OECD. However, as we've taken on the challenges of COVID, we haven't ignored the other big issues our Government was elected to address. Despite facing the worst health and economic challenge of our lifetimes, we have not stopped our work on issues like the housing crisis, water quality, climate change, or child poverty - because COVID hasn't made any of these existing challenges go away. In fact, it has made some of them worse.

We know child poverty in particular is an issue that has been made even worse as a result of COVID. Lockdowns hit everyone, but especially those who have the least.

This is why ensuring families aren't left behind has been critical to our response so far.

Earlier this month we set out the next step in this work. We announced an increase through Working

**Glen Bennett**  
MP for New Plymouth



[glen.bennettmp@parliament.govt.nz](mailto:glen.bennettmp@parliament.govt.nz)

Authorised by Glen Bennett MP and Steph Lewis MP, Parliament Buildings, Wellington

**Steph Lewis**  
MP for Whanganui



[steph.lewismp@parliament.govt.nz](mailto:steph.lewismp@parliament.govt.nz)

Authorised by Glen Bennett MP and Steph Lewis MP, Parliament Buildings, Wellington

year. It includes the largest boost to main benefit rates in a generation, to ensure families can afford to put food on the table. We've also made doctors' visits cheaper for more than half a million Kiwis, funded free period products in schools, and made going to school cheaper by scrapping NCEA fees and many school donations.

These are just some of the ways we're working to make New Zealand the best place in the world to be a child, and to ensure families here in Taranaki aren't left behind. There's still more to do, but we're really proud to be part of a Government that has put kindness and support for each other at the heart of its COVID response. This latest boost for families is just the next step in our work to secure a strong recovery for everyone.

*Glen Bennett  
MP New Plymouth*

*Steph Lewis  
MP Whanganui*

for Families which will see more than 300,000 families better off by an average of \$20 per week from April next year.

The Family Tax Credit and Best Start were due to be inflation adjusted, but to recognise the impact of COVID on families and the increased cost of living, we've made an additional investment to increase the rates by a further \$5 per week, on top of the inflation adjustment. We have also made changes to the abatement rate, lifting this from 25% to 27%, to reach those who need it most.

This additional investment is expected to lift an extra 6,000 children out of poverty.

We're also passing on the extra \$5 increase to Foster Care Allowance, and the Orphans and Unsupported Child benefits.

It's just one extra thing we can do to support families through these tough times, and it builds on the work we've already done to improve the wellbeing of our children.

This includes rolling out free, healthy lunches in schools which has benefitted around 200,000 children this

## Eltham Farm Supplies

INDEPENDENTLY & LOCALLY OWNED

Mon-Fri: 8am-5pm  
Sat: 9am-12pm

✉ [farmsupplies@elthamtimber.co.nz](mailto:farmsupplies@elthamtimber.co.nz)  
☎ **06 764 7003**  
📍 **178 Bridge Street, Eltham**





Let's keep moving >

Glen Bennett

for New Plymouth

027 438 9052  
[glen.bennett@labour.org.nz](mailto:glen.bennett@labour.org.nz)  
[labour.org.nz/glenbennett](http://labour.org.nz/glenbennett)

/GlenBennettLabour

Labour

Authorised by Dianna Lacy, 160 Willis Street, Wellington



be strong, be **KUHN**





THE POWER OF GREEN



**GET READY FOR THE SEASON AHEAD WITH A QUALITY MOWER**

<p><b>NEW PLYMOUTH</b></p> <p><b>65 KATERE ROAD</b></p>	<p><b>HAWERA</b></p> <p><b>16 GLOVER ROAD</b></p>
---	---

South Taranaki:  
**Raymond - 027 444 8861**

North Taranaki:  
**Paul - 027 498 7277**

TransAgCentre

(2014) Ltd. AGRICULTURE

... and proud of it

## Fibre optimism



**Barbara Kuriger MP for Taranaki-King Country**

The decision to merge two of New Zealand's wool

entities is fantastic news for growers," says National Agriculture spokesperson Barbara Kuriger.

Mrs Kuriger says the vote by Wools of New Zealand (WNZ) of 99.7% and outright 100% yes by Primary Wool Co-operative (PWC) shareholders to merge sent a strong message. "Wool growers throughout the country will be heartened by this news. While merino's doing well and prices are good for fine wool, this merger should strengthen

the opportunities for strong wool," she says.

The amalgamation of trading and operating businesses will form the new entity Wools of New Zealand LP "Bringing together a third of New Zealand's wool clip under one organisation is the biggest news for wool in years. I have no doubt the move will add the strength and scale needed to take the industry forward and I wish them well.

"As I said earlier this year, consumers are calling

for products with longer lifecycles, so we need a renaissance of natural products like wool.

"With climate change under a global microscope in Glasgow, making wool the insulation of the future in all buildings for example is a no-brainer. Not only is it warm and fire retardant, it's also easily exportable. "We could certainly lead by example in this country.

*Barbara Kuriger MP for Taranaki-King Country*

## On this month in history: Martin Luther King Day proclaimed

On November 2, 1983 President Ronald Reagan signs a Bill proclaiming the third Monday in January a national holiday in honour of Martin Luther King. Dr Martin Luther King, was a Baptist minister who

campaigned for equal rights for black people and the end of segregation. He advocated non-violence and civil disobedience. He won the Nobel Prize for Peace in 1964.

A stirring moment in history was when he led a march to Washington DC



where he made his famous 'I Have A dream' speech. He was murdered by an extreme racist on April 4, 1968 in Memphis, Tennessee.





HARDINGS

FUNERALS

The Hardings Difference.  
*Warm. Caring.*

Here for our community, here for you whenever you need us

Support available throughout All Covid Levels

17 Regent Street, Hawera  
(06) 278 8633  
[www.hardingsfunerals.co.nz](http://www.hardingsfunerals.co.nz)



Woodward's

FIREWOOD

Animal Bedding For  
Stand Off Pads  
Calf and Goat Sheds  
Wintering Barns

— Untreated ground up waste wood —  
— Raw material stockpiled then ground to order —  
— Pick up or delivered to your farm —  
— 9m<sup>3</sup> truck loads —  
— 65m<sup>3</sup> truck loads —

06 755 2047

124 De Havilland Drive, Bell Block • [office@woodwardsfirewood.co.nz](mailto:office@woodwardsfirewood.co.nz)  
[www.woodwardsfirewood.co.nz](http://www.woodwardsfirewood.co.nz)



# Multiple milestones at Remembrance Day

Remembrance Day 2021 turned out to be a special one for Reverend Geoff Williams. Geoff is the long serving padre and secretary of the Opunake RSA. He is also an Anglican minister and a veteran of the Korean War where he served aboard the HMNZS Katiere. "It was just like COVID. You were out on patrol and looked at one another," he recalls.

Over the years Geoff has become something of a regular fixture at Remembrance Day and ANZAC Day ceremonies in and around Opunake. At this year's Remembrance Day ceremony he told the crowd gathered by the Library and Peter Snell statue that this would be the last Remembrance Day service he would be leading. This year also marks 25 years as secretary of the Opunake RSA, a post from which he is also stepping down. With Geoff's final Remembrance Day service completed it was on to the Sandfords Event Centre where there was a special lunch to celebrate Geoff's



Reverend Geoff Williams cuts his 90th cake.

For the last 14 years, Geoff has led the Remembrance Day service at Opunake. Before the service was shifted to its present location it was held at the Opunake Cemetery. This year there was a gathering of about 50 people for Geoff's final Remembrance Day service, including students and staff from Te Kura Kaupapa

War I ended at 11am on November 11 1918. Every year services are held around the world where there is a time of silence on the 11th hour of the 11th day of the 11th month. Geoff told the audience that the day was originally meant to be for those who died in World War I, but now remembers all those who fell in other conflicts as well.

remember all those who died fighting for their cause." Geoff spoke about the conflicts New Zealand had been involved in. There was South Africa in 1899, the first time New Zealand troops had served overseas, as well as the battles of the First World War including Gallipoli. "We landed in the dark and left in the dark," said Geoff. There was World War II and the contributions made by the New Zealand Expeditionary Force, those who served in Bomber Command, as well as Keith Park, the hero of the Battle of Britain, and those who served in the navy, including those who served aboard the Achilles in the Battle of the River Plate. World War II was followed by other conflicts including Malaya and Borneo. "That was a very different war, a different way of fighting, jungle warfare." Geoff quoted the words of Jesus that the greatest love a person can have is to lay down their lives for their friends, and his admonition to love your neighbour as you love yourself. "This is one of the hardest words in the world," he said. After the service it was on to the Sandfords Event Centre,

where Geoff cut the cake, even if COVID rules meant the traditional blowing out of candles had to be dispensed with.

Andy Whitehead spoke of two of his uncles, one who served in Egypt in World War II and did not come

home, and another who fell at Passchendaele in the First World War and whose grave he visited two years before.

He paid tribute to Geoff. "Today we remember fallen, but also the staunch and the strong," he said.



FOR SALE | GREAT OPPORTUNITY HERE

1703 Eltham Road, Riverlea

Take the time to view this well presented dairy farm located in the Riverlea area comprising of 132.74 hectares (328 acres) of fertile land. Pastures are strong, land is flat to gently sloping with most of the farm being harvestable. Races are well maintained leading to an exceptional 50 bale rotary cowshed and feed pad.

Being divided by the Eltham Road, this has an underpass in place with 50 hectares on one side, main dwelling, workshop, calf rearing facilities and the remainder of land and cowshed on the other. Racing is wide and in good order.

This is a well located farm in a consistent farming area and has a climate that will tick a lot of boxes.

The service town of Kaponga is not far away and its an easy drive to get to the Opunake beach and township.

Please call Ben Johnston (027) 422 0030 or Brent Dodunski (027) 498 4346 to arrange a viewing.

eieio.co.nz #HR00830

For Sale Expressions of Interest

Viewing By Appointment Only

Ben Johnston M 027 422 0030

Brent Dodunski M 027 498 4346



Reverend Geoff Williams addresses people at Opunake's Remembrance Day.

90th birthday, even if the big day had been five days earlier.

Maori o Tamarongo. "Even in this country of ours' Aotearoa we have had our land wars, so we

## Taranaki speed reviews and New Plymouth to Egmont Village safety improvements

### Have your say He aha ōu whakāro?

Monday 15 November - Monday 13 December

#### We're working towards an Aotearoa where everyone gets home safely.

Speed is the single biggest factor that determines whether you, or your whānau and friends make it home safely. So, we're reviewing speeds on some Taranaki highways to make sure they are safe and appropriate for the area.

We're also proposing infrastructure safety improvements on SH3 between New Plymouth and Egmont Village.

Locals know their roads best so before we make any changes, we want to hear what you think.

#### To find out more and have your say visit:

Speed review website: [nzta.govt.nz/taranaki-speed-reviews](https://nzta.govt.nz/taranaki-speed-reviews)

New Plymouth to Egmont Village safety improvements website: [nzta.govt.nz/hp2h](https://nzta.govt.nz/hp2h)

#### Come along to a drop-in session:

Speed review drop-in sessions
Sat 27 Nov, 1pm to 3pm, Ōakura 4 Square
Tue 30 Nov, 3pm to 5pm, Stratford District Library and Visitor Information Centre
Thu 2 Dec, 3pm to 5pm, Hāwera Library
Speed review online sessions
Mon 29 Nov, 6pm-7pm
Tue 30 Nov, 6pm -7pm
<b>Email to register for online sessions:</b> <a href="mailto:Taranaki.Speed.Reviews@nzta.govt.nz">Taranaki.Speed.Reviews@nzta.govt.nz</a>

Speed review and New Plymouth to Egmont Village infrastructure improvements drop-in sessions
Wed 1 Dec, 3.30pm to 5.30pm, Puke Ariki Library
Mon 6 Dec, 3pm to 7pm, Mangorei School
Tue 7 Dec, 4pm to 7pm, Egmont Village Community Centre

## BEAUTY AT TURN HEADS

PURE FIJI

Discover the South Pacific's Secret for Beautiful Skin

**Gift vouchers are available**

**PURE FIJI** has come to Opunake. See Rhonda or Lynley for all your Pure Fiji essentials.

Available at Turn Heads  
88 Tasman St, Opunake | Ph 027 295 0324

# Clem and Lene's Opunake Discounter



Clem Coxhead and Lene Croucamp new owners at Opunake Discounter.

came up and we jumped at it," explains Clem.

It's early days, but the couple are enjoying catching up with people and also not having a long drive to (and from) work; they have now sold their Hawera business.

"It is important when you live in a town to be part of it," comments Clem.

Clem and Lene have made some fundamental changes to the shop's layout with the idea of making it more community friendly, as well as easily accessible to shoppers. This includes setting up the counter at the front of the shop. "We are strong believers in being able to greet people at the door."

He explained that when customers enter the shop the left side "is geared for quick shopping, such as someone wanting a Tip Top ice cream" ("We are the only seller of Tip Top cones on the main street.") or the small bags of lollies. However, the right side is for the benefit of those intending a more leisurely shop, maybe for the



Stocking a wide selection in store.

weekly groceries. Everything is well spaced, "You don't want people pushing past you," comments Clem.

At present Clem and Lene are quick to offer to carry out groceries for their more elderly customers. However, in the near future they are keen to establish a home delivery service.

Also planned are chairs and tables, on the immediate pavement area, to enable people to sit and enjoy a coffee or cup of tea. "Once the cafes are closed, at present there is nowhere to get a coffee," says

Clem, "especially on movie nights."

The shop has a huge selection of quality food and goods, including hardware, all at very competitive prices. However, if there are other items that are not available in the shop, the couple are happy to endeavour to order them. "It is much better for us to provide what people want."

For those seeking a lunch there is a good selection of Anderson's hot pies, as well as sandwiches and filled rolls made on the premises.



We specialise in Stainless steel fabrication, benching, piping, tanker repairs, mild steel, site installation and general engineering



Contact Ian Schoemaker: 027 277 3173  
ian@elca.co.nz Elcastainless · Engineering service

Clem Coxhead and his partner Lene took over the Opunake Discounter business at 80 Tasman Street, Opunake on October 25. When the opportunity came up to buy, the couple were running Coffee Mania in Hawera, which necessitated a 4am start each day. They saw this new venture as a way to be an integral part of the Opunake community, complemented by a gentler lifestyle. "The opportunity

## OPUNAKE DISCOUNTER

**New Local Owners Clem and Lene of the Local Discounter for the Locals at 80 Tasman Street Opunake**

**Come and see the new look!**



**WE STOCK A GOOD RANGE OF GROCERY ITEMS AND ARE HAPPY TO BRING IN ITEMS IF ASKED**

**OUR NEW LOOK AND SERVICE INCLUDES:**

Wildcat Coffee, Tip Top Cone and Cup Ice Cream

Sandwiches

Pies

Fruit and Veges arriving soon

Large range of Drinks and Ice Cream

Try our \$2 Lolly bags

Yarrows Bread including Salba

Fish Bait

Salt and fresh Ice

**OPEN FROM 7AM- 9.30 PM 7 DAYS**



The new shop lay-out.



Dave's available for all farm maintenance digging and all landscaping work.

**S.O.S**  
Specialist Outdoor Services

**call 027 605 8437**

**31 King Street - Opunake**

Freshly prepared salads will also be a healthy feature.

They want also to cater to their youngest customers. There is a huge selection of small bags of lollies for just \$2.

Staples such as bread and milk are also attractively priced. Yarrows bread is just \$2 a loaf while the Salba brand (which they use in their sandwiches) is just \$4.

Clem and Lene seek a harmonious relationship with others in the business community. "We are not here to compete – just to offer a service."

Clem and Lene offer a seven day service at the Opunake Discounter from 7am to 9.30pm. Friendly service is guaranteed. Eventually, they will seek staff, but for the moment "We want to run it alone until we fully understand the business."



**Broil King®**



  
**TRAEGER®**  
 IRONWOOD 885



**weber** 



**escea.**



**Make your backyard the place to gather all year round with our range of BBQs, furniture, umbrellas, heating & spas.**

**4 Seasons New Plymouth**

460 Devon Street East, Strandon, New Plymouth | 06 769 6354 | 4seasons.co.nz

# A view of Covid from a German correspondent

We have received this from someone formerly living in New Zealand and now back in Germany.

The incidences are galloping away, the hospitals are filling up, the dead are increasing. In order to prevent the fall of 2020

gastronomic equivalent of the often mentioned intensive care beds, which have more than just statistical value, even if someone is there to take care of them.

Tens of thousands are also missing in service. One of the main reasons is the uncertainty. Anyone who was affected by the

ProSieben, ntv), podcast host ("Apocalypse and filter coffee"), occasional cartoonist. There are things that I notice. Sometimes I even get upset. And since the impulse control is constantly jammed, they have to get out. My religious symbol is the crosshair. The razor blade is my dance floor. And

unvaccinated nurses? Dead in the retirement home after the corona outbreak? Yeah, let's play this shit all over again now!

In a better world, the still ruling federal government would quickly push through the compulsory vaccination and take this unpopular decision on itself.

group. If it is prescribed by law, even the sceptic no longer has to justify going to the doctor. It would also free us from the horrific vaccination debates, which often drift into the pastoral, if the private vaccination decision of a national player is dragged into the public and everyone between

**gibsonplumbing** LTD.

**CERTIFIED**

Plumbing, Gasfitting and Drain Laying

Plus! Roofing, Wood Fires and other Heating Solutions

06 761 8757 027 445 7164  
gibson.plumbing@xtra.co.nz



EZI-SPOT 50L QUAD-PRO ATV Sprayer, "Smoothflo" 6.8 l.p.m. 107 p.s.i.  
WAS 5990 + gst  
**NOW \$800 + gst**  
For a limited time only



BA K Pistol, Heavy Duty w Swivel & Hosetail

**BA PUMPS & SPRAYERS**

South Taranaki  
**Raymond - 027 444 8861**

North Taranaki  
**Paul - 027 498 7277**

**TransAg Centre**  
AGRICULTURE  
... and proud of it

**CASE II** **KUHN** **KRONE**

interesting for readers to know what's happening on the other side of the world with the Covid situation.

A caution perhaps of things to come if we don't fully vaccinate.

Germany recorded 90 deaths in the most recent 24 hours at the time of writing which, extrapolated for New Zealand's population would accord to five deaths in the same period.

At its height however on January 13 2021 (mid winter) Germany recorded 1111 deaths from Covid, which would equate to 70 deaths in New Zealand adjusting for population.

In order to prevent the lockdown year 2020 from repeating, a vaccination is now required

© Sebastian Kahnert / dpa-Zentralbild / DPA

October 31, 2021, 10:25 am

from happening again, it is now necessary to have a vaccination, thinks Micky Beisenherz.

"Tell me, when do you open up tomorrow?"

At a restaurant around the corner from me, I'm sitting outside among the people enjoying this beautiful autumn afternoon, toasting life with beer. Outside, because there are no more seats inside.

"I don't even know if we're going to open it at all. We haven't had any staff for weeks," groans the manager.

A sentence that has recently been heard more frequently in gastronomy. In the best case, you wait longer for your drink. It is not uncommon, however, that entire sections of the restaurant are not opened or the bar is closed completely because there is no one there who can serve. The

## Receiving the vaccine in Germany.

lockdown at the time will not return in the fall. First of all, everyone looks to see what happens. Wouldn't everything be shut down again after all? Suddenly it's October 2020 again. Sure, we now have a vaccine. On the other hand, there is Delta (no, that is not the new name of Facebook, even if there are certainly parallels), higher levels of infection and increased cases of vaccination breakthroughs. (All of whom cannot imagine in unison how bad they would have been without vaccination).

Creepy New Infection Dynamics

The incidences are galloping away, the hospitals are filling up, the dead are increasing. We are achieving new infection dynamics that, when the Chancellor calculated that for us at the time, were creepy. And now I'm sitting there angry that it takes so long with the beer. I have to report to my doctor. He called last week about the pending booster vaccination.

Micky Beisenherz: Sorry, I'm private here

My name is Micky Beisenherz. I'm a world star in Castrop-Rauxel. I have to pay for everything myself elsewhere. I am a multimedia

(In) grocery store. Author (Extra3, jungle camp), presenter (ZDF, NDR,

just now my feet are itching again.

I have recovered since June. Re-vaccinated in August. Now I should be boosted. "Let yourself be boosted." That's what Jens Spahn said. It sounds a bit slogan-like, almost as if the outgoing health minister had already practiced for his follow-up assignment with a financial service provider, but: he's right.

In order not to slip back into the traumatizing time we had a year ago, we have to restart the old vaccination logistics for better or worse. It feels like this: If the company is a ship, it starts to rust again at the stern, while we actually wanted to clink the champagne bottle at the bow.

Booster vaccination is necessary

Anyone who was twice impregnated against the virus in January is slowly needing it again. Those whose arms are still virgin anyway. Therefore: Open centres again, hire staff and in addition to the awareness campaign: An end to the vaccination offers. From now on there should be a vaccination requirement. We simply can no longer afford this negligence. If a professional footballer is unvaccinated, then that is somewhat surprising, but:

What is there to lose? In England people even take to the streets against corona measures that no longer exist. In the end, one would only disappoint the trust in the politics of those who no longer have any anyway. We are not Portugal, where clever communication has created an almost nationwide vaccination coverage. Perhaps we Teutons are simply not suited to this kind of gentle memory.

The compulsory vaccination would not be a novelty either, such as the legally required vaccination against smallpox between 1949 and 1975. We became world champions at that time anyway. Yes, it is possible that many people would take to the streets, Wendler would chain himself to the Quadriga, and the highly regarded lateral thinkers would freak out. They do that for less, however. And they could at least get a cappuccino in the café next door while protesting because the shop would, well, just be open. Psychologically, compulsory vaccination would even be a real opportunity.

Open the vaccination centres again

Wherever the shot is binding, the person who refuses to be vaccinated is also protected from losing face in front of his peer

Angela Merkel and Uwe Seeler can publicly worry about the man's antibodies. "Federal government hopes for Kimmich vaccination". When are the blue helmet troops coming?

As someone like that should say credibly after the undoubtedly existing public pressure "You have convinced me, I am going to be vaccinated now." It is absolutely a mystery to me. It is fine now. Open the vaccination centres again. Commit people to immunization. We all messed up communicatively. Now is the end of the debate and pragmatism is the order of the day. If only so that I can go to this pub tomorrow.

Germany recently experienced 50,000 cases in one day a new high which, taking into account population, would translate to 2941 cases a day in New Zealand.

In Berlin, one hospital has reported their 120 bed intensive care facility is full with Covid cases, none of which were vaccinated. Other operations are being postponed.

Germany is currently experiencing an average of 164 deaths a day.

Taking into account New Zealand's population that would translate to around 10 deaths a day in New Zealand.



# A Starblazing success for St Joseph's School

St Joseph's School presented their musical Starblaze on Wednesday November 3 (matinee and evening) and Thursday November 4 evening at Opunake High School's hall. The words of the musical are by John Reynolds and the music composed by Shade Smith. It was ably directed by Paul Andersen-Gardiner. A huge number of people contributed to make this show a success, not forgetting the students; as the programme said, "You are all Stars".

The futuristic show had a large cast with characters such as Captain Sanderson (Grace Clough), Sandy Sanderson (Isabelle Neil-Warner) Dr Sneetch (Eleesha Fernando), Odium (Gerald Torres), Astro (Chloe Bartley), Cosmo (Crystal Jordan), Space Sergeant (Christine Centeno), Colosso (Ayla Torbett), as well as First pirate (Holly Gulliver) and Second pirate (Cady-Maree Barriball). Also, there were a number of Heavies



If looks could kill!

with the planet Zodark to capture the spacecraft which is crewed by the space pirates. I won't say too much more, as the show is sure to have future productions, but rest assured there is a happy ending.

The components of the

Storm Warning Space Pirates and Rocket & Roll it Space Pirates. The excellent choreography was by Bianca Aldridge and Vanessa Le Prou, respectively.

Paul Andersen-Gardiner commented, "Despite the extended rehearsals (due



The entire cast in all their splendour.

and Space Pirates.

The storyline involves a band of women (space pirates) who have escaped earth because a dictator Odium has taken over. After a space battle Odium is captured, but later escapes. Odium has an agreement

show included Room 1 and Room 5 Year 6 Girls Zodarks (Ask the Stars), Room 2 Girls Golden Dreams (Zodarks), Room 2 and Room 5 Boys and Year 4 and 5 Girls Horriiffs.

A feature of the show was the dancing which included

to Covid) the children remained focused and enthusiastic and it showed in their performances."

*Rolland McKellar*

**GET YOUR LAWNMOWER & CHAINSAWS SERVICED HERE!**  
We service all types of LAWNMOWERS, BIKES, CHAINSAWS & RODS & REELS

**STARTING PROBLEMS? NOT ANY MORE...**

**HP AND LAYBY AVAILABLE**

**SYMES OUTDOOR & SPORTS LTD**  
Tasman St, Opunake | Ph 06 761 8778

**Paddy Bolger**

Fully licensed Agent!  
Not just a salesperson with over 44 years experience having sold more than 2000 properties.

*Paddy is here to help you sell your*  
• Property • Farm • Lifestyle • Others

*Paddy has buyers looking for dairy farms from \$3 million to \$10 million, sheep and cattle units, forestry land & all types and sizes of lifestyle properties.*

**If you are thinking of selling or buying**  
*For the right*  
**ATTITUDE - ATTENTION - ACTION**  
**Call Paddy today**  
**Mob: 027 434 4464 | Home: 06 757 2018**

Property Brokers **Taranaki** Like us on

Licensed agent REAA2008

## Peter Kuriger Engineering & Concrete

**We Repair Farm and Contracting Machinery - Hydraulic Rams Diggers and all Buckets - Tip Trailers - Quarry Equipment and undertake General Maintenance - plus Stainless Welding**

**Need Concrete?** troughs, culvert pipes and lids, bridge decks, box culverts and bases, inspection pipes and much more....call us.

**889 Upper Kaweora Road - Opunake 0274 526 718 - 06 761 8122**





**ELTHAM**  
BUILDING SUPPLIES

Cabinet Making, Glass Supplies & Custom Joinery Solutions

Donald & Ian Murray

06 764 8616 027 242 8379  
027 348 9445

136 High Street, Eltham  
eltham.bs@gmail.com  
www.elthambuildingsuppliers.co.nz

Advertise your event in the  
**Opunake & Coastal News**  
Call our sales team on  
06 761 7016



**SCHURR IRELAND**  
CHARTERED ACCOUNTANTS

NEW PLYMOUTH ELTHAM  
p. 06 759 0105 p. 06 764 8305

www.schurrireland.co.nz



Our Family, Caring for Yours

CALL US TODAY  
06 278 8088 - All hours

SOUTH TARANAKI FUNERAL SERVICES

**NEW PRODUCTS COMING IN OCTOBER**

GET READY FOR SUMMER WITH OUR NEW POOL AND SPA PRODUCTS.

- PH UP/DOWN FLEXIE PACKS •
- ALGAE KILLER • TRICHLOR TABLETS
- WATER HARDNERS • STABILISED CHLORINE • TEST STRIPS • BROMINE



Tasman Street, Opunake Ph: 06 761 7079

**COASTAL AGRI SERVICES**  
Our Promise... "PEACE OF MIND"

# A good sort of person



Andie Goodman a good sort winner.

Andie Goodman was the winner of the November Opunake Lakeside Lions Good Sorts. We had many nominations.

Andie is a mother of five boys but somehow found time in her busy life to assist as a volunteer and instructor for the Aqua Tot program, teaching tots water confidence.

This program is one of many held at our local pool. The nominator says it would be difficult to run the program without Andie and for many years she has taught local tots the art of floating and enjoying water, safely.

So we thank you Andie. We appreciate all you do and are pleased to give an Opunake Business Association voucher to spend at any local business.

*Opunake Lakeside Lions*

## Gardening with Palmers Gardening Centre



# How to grow blueberries



Beautiful blueberries.

Blueberries are popular because they can grow in a small space as well as in pots. Blueberries make an ideal hedge or a stand-alone garden specimen as they have no thorns, are non-

invasive, and don't need staking or spraying.

Blueberries are the ultimate fast food snack. High in antioxidants and anti-inflammatory compound they also contain reasonable levels of vitamin C, A, E and several B, and are a good source of dietary fibre.

Plant in full sun, though they can handle some afternoon shade. Adequate water is essential during the

growing season. A lack of water results in undersized berries and a poor crop. Remove most of the flowers in the first year to allow the plant to establish its roots and foliage to sustain its future crops.

Blueberries like acid soils as they have a shallow root system and thrive on moist, free draining soils with high organic matter. Mulch blueberries with a bark, compost, or sawdust to conserve moisture, prevent weeds and increase the soil organic matter.

Blueberries require only light applications of general fertiliser in the first few years. Continual addition of compost and mulch will generally supply their needs.

Blueberries are mostly self-pollinating but two different varieties will cross-pollinate resulting in a bigger crop. Varieties like Tasty Blue, Blue Magic and Blue Dawn fruit from December through to February.



Fruit is borne on last season's wood, and vigorous wood bears the largest fruit. Pruning consists of removal of dead or diseased wood, weak growth, and old twiggy branches. After 4-5 years the oldest branches may need cutting back to encourage vigorous new growth.

Blueberries are naturally resistant to many common pests and diseases. Root rot can be a problem on waterlogged soils; ensure you plant in ground with good drainage. Birds can cause serious damage to fruit, so netting is advised.

If planting in a container attention to watering and feed is very important as there is limited area for the roots to source these.

## Palmers knows plants

At Palmers, you'll find a Garden Centre full of passionate gardeners who are ready to share the joy of good living with you. We are all about creating beautiful spaces, at our place and at yours. We're locally owned and operated, packed with quality products and expert advice for your home and garden.



## CAFÉ BOTANNIX

The ideal setting to stop in for a delicious meal, made in-house with seasonal garden produce. Our tranquil garden setting and covered outdoor courtyard is the perfect place to relax after meandering through the garden centre.

Cnr Katere and Devon Rd, Fitzroy, New Plymouth. Ph: 06 758 7455. Open 7 days from 8.30am.



# Retirees tell Government: We've had a gutsful

Retirement village residents representing retirees living in more than 70% of New Zealand's registered villages have a clear message for the Government today: It is time for their voices to be heard alongside those of operators. The Retirement Village Residents Association of New Zealand (RVRANZ), New Zealand's peak body advocating for residents, is calling on the Government to set down clear timeframes for a fulsome review of the Retirement Villages Act.

"All New Zealanders living in retirement villages have a right to feel safe, secure and heard," says RVRANZ President Peter Carr.

"Right now, the system governing the way we run our retirement sector was penned in the interests of companies running retirement villages, not the rights and interests of the people living in them.

"As New Zealand moves to support the

largest generation yet into retirement, the Government has an opportunity to ensure the rules governing the sector are fit for purpose," Peter Carr says.

The Association has the support of 13,000 retirees who signed the petition presented to National MP Hon Simon Bridges at Parliament.

Associate Minister of Housing, Building and Construction Poto Williams has received clear recommendations from the Retirement Commissioner, Consumer New Zealand and retirees across the country on what needs to change. However, RVRANZ says the Minister has sat on this advice, with no clear indication of timeframes for action.

"Residents are continuing to work with operators on those areas where we can make progress without government. But this good faith engagement can only take us so far.

"If we want to ensure retirees are presented with paperwork that is easy to understand, have a clear idea of care available to them now and in future, have fair fees, dedicated advocacy support and are protected from cowboy operators we need the Minister to engage with the advice she has been given, demonstrate leadership and set down timeframes for action."

"Without decisive leadership, too many New Zealanders will enter retirement on an uneven footing, unclear of their rights, and without simple recourse should something not go to plan.

"The Government can right the balance, and build a just, fair and equitable retirement sector by setting down clear timeframes for the completion of fulsome review of the Retirement Villages Act prior to the General Election," Peter Carr said.



## Our Christmas Edition and Holiday Guide will be out on the 16th of December.

The deadline if you would like to wish your customers and clients a Merry Christmas or feature your business in the Holiday Guide is December 7. Get in touch with us now!

Email: [ads@opunakecoastalnews.co.nz](mailto:ads@opunakecoastalnews.co.nz)  
Ph: 06 761 7016



**FREE LOCAL DELIVERY ALL MONTH**

**Furniture Zone**  
*make your house a home*

## Sleep Away Sofa Bed

**\$899**

- Stylish and modern couch, with a storage unit that folds out to become a bed, perfect for friends visiting over the festive period.
- Designed for style and comfort.

**VISIT YOUR LOCAL STORE:**  
298 Devon Street East, New Plymouth



**Free Delivery T's and C's:** 20km radius. Purchases over \$1,299. Excluding public holidays. Subject to driver and stock availability.



# New bridge puts Taranaki students on career path

It takes a village to raise a child, but it takes a partnership of industry, education and NPDC to help our young people build a bridge to a career.

Building the new Camden Street footbridge over the Huatoki River has given eight secondary school students from around New Plymouth District valuable job skills and the option of a future in construction when they leave school.

The students worked on the bridge almost every Thursday over nine months, learning about design principles and how to handle the tools and materials.

“The old bridge was at the end of its life and we saw an opportunity for our Taranaki Talent Pipeline careers programme to support much-needed training in the expanding infrastructure

and construction sector, while giving some of our young people on-the-job skills and a solid grounding in health and safety,” said NPDC Group Manager David Langford.

“As the project leader, NPDC can save costs in the long term by ensuring high-quality workmanship which will extend the lifespan of the new bridge. We hope these students will find rewarding careers and help us keep building a Sustainable Lifestyle Capital and maybe lead similar projects to pass on their skills in the future.”

The eight students came from five schools -- Inglewood High, Francis Douglas Memorial College, Spotswood, Te Kura and Coastal – now have their names on a plaque at the bridge to celebrate the partnership and their training



**Students at the opening of the Camden St Bridge.**  
**The students are: Marcellin Baiteke, William Faoagali, Lochlan Hemingway, Cortez Hotene-Joseph, Xavier Marshall-Brown, Itibwebwe Nganga, Hunta Ryder and Caleb Terry.**

**NEW LISTING - OPEN DAY TOMORROW**

**McDonald REAL ESTATE**

**TENDER | THIS IS ONE TOP FARM**

**2344 Opunake Road, Awatuna**

Bordering both the Opunake and Auroa Roads, this productive 67.98 hectare (167.98 acre) dairy farm is currently milking between 170-180 cows through an extremely tidy 20 ASHB cowshed with an in-shed feed system and last year produced a little under 73,000 kgMS.

Being largely flat in contour with an excellent T race system, very tidy fencing and a reliable bore water system, this farm is very well set up and is a dream to manage.

The house is a 4-bedroom brick and cedar home with 2 living areas, 2 toilets and a large outdoor decked area. Recent improvements include a new Metro fire, HRV system, water filtration, kitchen alterations and new carpet.

This farm presents very well and in today's market represents good buying. Come along to the open days or book a time to view as you will be impressed with what is on offer here.

eieio.co.nz #KPR00046

**Tender Closes**  
 4.00pm Friday  
 10th December 2021  
 at McDonald Real Estate Ltd  
 50 Tasman Street, Opunake

**Open Days**  
 Friday 19 November 12:15pm-12:45pm  
 Friday 26 November 12:15pm-12:45pm  
 Friday 02 December 12:15pm-12:45pm

**Blair Burnett**  
 M 021 190 7728

**Ben Johnston**  
 M 027 422 0030

**FOR SALE | LARGER COASTAL DAIRY OPPORTUNITY**

**McDonald REAL ESTATE**

**883 Waiteika Road, Opunake**

Dairy farmers looking for a bit more scale or for a bigger first farm, you best consider this one.

Comprising of approximately 160.25 hectares (395.99 acres) in total, being 79.30 hectares freehold and 80.95 hectares West Coast Lease, this farm is currently milking approximately 280 cows through an extremely tidy, 6 year old, 44-bail rotary cowshed and, with its young stock grazed on farm produced 101,383 kgMS last season.

Being predominantly flat to easy in contour, with some Lahar on the Waiteika Road frontage, this farm has plenty of mowable country, is well subdivided, raced and has a reliable water supply.

Along with two tidy homes on farm and plenty of sheds for storage, hay and calf rearing there is real opportunity to take this farm to the next level.

Take the time to come and view this farm as you will see the potential here.

eieio.co.nz #OPR00888

**For Sale**  
 By Negotiation

**Viewing**  
 By Appointment Only

**Blair Burnett**  
 M 021 190 7728

**NEW LISTING**

**McDonald REAL ESTATE**

**FOR SALE | LARGE DAIRY FARM WITH PLENTY TO OFFER**

**1384 Ihaia Road, Opunake**

Comprising 207.6 hectares and located on the Ihaia Road, Opunake this farm is currently milking 250 cows through a very tidy 30 ASHB cowshed complete with ACR's and in shed feeding.

Being flat to easy in contour, this farm is well raced and subdivided, with a reliable water supply, tidy race systems and fencing in place.

Complemented by two extremely tidy and well presented family homes and plenty of support buildings for storage, hay and calf rearing, everything is in place to simply move in and carry on farming.

This farm has scale, presents well and provides a real opportunity for a sharemilker stepping up to their first farm or an existing farmer growing their farming operation.

Representing good buying, the vendors are motivated to move to their next venture.

\$4,100,000 plus GST (if any)

eieio.co.nz #OPR00921

**For Sale**  
 \$4,100,000 plus GST (if any)

**Viewing**  
 By Appointment Only

**Blair Burnett**  
 M 021 190 7728

**OPEN DAY WEDNESDAY**

**McDonald REAL ESTATE**

**TENDER | VERSATILE OPUNAKE RUNOFF**

**955 Opua Road, Opunake**

Located at 955 Opua Road, Opunake is this very handy and versatile runoff comprising 58.34 hectares (144.17 acres) of land which is currently growing dairy replacement heifers, rearing calves, and cutting supplements.

With tidy race systems, fences and a reliable water supply in place, this farm would be an ideal block to grow your young stock close to home, winter cows and/or cut and carry some supplements.

The contour of this property comprises a mixture of flat, easy and rolling land with some Lahar, there is plenty of mowable contour for the making of supplements.

Support buildings include a disused cowshed and yards, along with a good-sized barn/calf shed.

If you're looking for a runoff or support block, this is one you must look come and look at.

eieio.co.nz #OAR00358

**Tender Closes**  
 4.00pm Thursday  
 2nd December 2021  
 at McDonald Real Estate Ltd  
 50 Tasman Street, Opunake

**Open Day**  
 Wednesday 24 November 12:15pm-12:45pm

**Blair Burnett**  
 M 021 190 7728

**OPEN DAY TODAY!**

**McDonald REAL ESTATE**

**FOR SALE | PREMIUM DAIRY FARM WITH SCALE**

**139 Bayly Road, Pungarehu**

Located on the popular Bayly Road is this top quality, 174.38Ha (430.89 acre) dairy farm which is currently milking approx. 450 cows through a very tidy and fully automated 44 bail rotary cowshed. Currently in 3 titles with 3 homes, the main home being a large 4-bedroom brick family home set in magnificent gardens, this farm is well subdivided, has very good race systems, fencing and water reticulation. The land is largely flat to easy in contour and has a mix of strategically planted live hedging and shelter belts which, as well as providing shelter, gives the farm the appearance of a park-like setting. Currently operating as a level 1-2 system, this farm is growing about 25Ha of crops comprising of 20Ha of Chicory and 5Ha of Maize. With an engineered effluent storage system installed in 2019, numerous farm buildings for hay, storage, implements and calf rearing purposes, everything is in place to carry on as the vendors have done for many years. With the addition of an adjacent 26.7Ha lease block currently being utilised in the farming operation (possibly available to purchasers), there are plenty of options available on the table for purchasers, including a Going Concern. Viewing will not disappoint and as such is highly recommended.

eieio.co.nz #OPR00881

**For Sale**  
 By Negotiation

**Open Day**  
 Thursday 18 November 11:00am-11:30am

**Blair Burnett**  
 M 021 190 7728

**NEW LISTING - OPEN DAY TOMORROW**

**McDonald REAL ESTATE**

**TENDER | SUBSTANTIAL WAITEIKA ROAD DAIRY FARM**

**1002 Waiteika Road, Opunake**

Located on Waiteika Road, Opunake this farm comprises 128.28 hectares (316.99 acres) of flat to easy contoured land with a little Lahar and is currently milking approximately 285 cows through a very tidy 30 ASHB cowshed.

Being largely square in shape and serviced by two main race systems, this farm has tidy fencing and a reliable water supply which makes the farm management all the easier.

The two homes comprise of a large, lovely and well maintained 3 bedroom, 2-bathroom family home, in a mature garden setting and a tidy 3-bedroom cottage.

With a good range of support buildings and good infrastructure in place, there is genuine opportunity to purchase a farm with some scale in a reliable farming area with a consistent production history.

If you are looking for a farm with some scale and further potential this is a must see.

eieio.co.nz #OPR00918

**Tender Closes**  
 4.00pm Thursday  
 9th December 2021  
 at McDonald Real Estate Ltd  
 50 Tasman Street, Opunake

**Open Days**  
 Friday 19 November 1:15pm-1:45pm  
 Friday 26 November 1:15pm-1:45pm  
 Friday 03 December 1:15pm-1:45pm

**Blair Burnett**  
 M 021 190 7728



# Average residential home cracks \$1 million

The property market reached new heights last month with the average residential home value topping \$1 million for the first time, according to Quotable Value(QV)figures.

This comes as large tracts of the country remain in level 3 lockdown restrictions, which seemingly hasn't dampened buyer demand. The average value increased 5.3% nationally over the past three-month period to the end of October, up from the 3.6% quarterly growth in September, with the national average value now sitting at \$1,002,153.

This represents an increase of 27% year-on-year, up a fraction from the figure of 26.3% reported last month. In the Auckland region, the average value now sits at \$1,427,896, climbing 5.6% over the last three month period, with annual growth of 24.8% – up slightly from September's year-on-year growth of 23.9%.

Taranaki New Plymouth's residential property market continues to smoulder, with values increasing by an average of 6.5% in the last three months and 28.3% annually. The average residential home value in

New Plymouth is \$707,878. It has been even hotter in Stratford District, where home values have increased by 34.7% annually. The neighbouring South Taranaki District has also experienced house value growth of 32.9% over the past 12 months.

QV general manager David Nagel commented: "There's certainly still buyers out there who are keen to commit to property transactions despite ongoing uncertainty around Covid-19 and the impacts this is likely to have on the economic recovery.

"Credit availability continues to tighten as banks respond to RBNZ concerns around property market stability, particularly with interest rates on the rise. But a continued lack of supply has resulted in a resurgence in prices across all 16 metro locations we monitor," he said. "A reported flood of new listings will provide some welcome relief for house hunters. With interest rates rising faster than most initially expected, there appears to be an element of panic buying from those who have been in the market for a property for some time, keen to lock in a mortgage

rate that's still at historically low levels," he added.

The strongest value gains for the main cities over the past three months have come from Christchurch at 10% growth in value, up from 7.7% value growth last month, followed by Queenstown Lakes District at 9.6% growth, building further on the strong three-monthly rate of growth of 9.4% reported last month. None of the 16 major urban areas QV monitors have seen a decline in average value, with all but Palmerston North and Napier at 3.7% and 5.1% respectively, showing an increase in

the rate of three monthly growth since last month. The Manawatū-Whanganui region continues to be the strongest growing region with 34.7% growth over the past year, closely followed by the Canterbury region at 34.1%, while the Hawke's Bay and greater West Coast regions have experienced annual growth of 33.9% and 32.7% respectively. The three lowest annual growth rates are all in the South Island, with the Southland region experiencing a still-significant 20.4% increase, the Tasman region recording 22.1% growth, and Otago at 24.4% annual growth.

## Stoney Oaks Wildlife Park



Saffy.



Dream with Stone.

Twin Highland calves were born at Stoney Oaks Wildlife Park recently, the first in 38 years of breeding Highland cattle so it was super exciting. Dream had a bull calf named Stone and a heifer named Saffy. It was decided to hand rear the heifer calf for the park so people can get a real hands on experience with a Highland calf, and she's been a real hit over the holidays.. Both twins are a beautiful silver grey as Mum Dream is white and Dad Munro was a Black Highland.

Photos Gail Simons.

NOW, ALL ON ONE YARD!!

Cnr Belt Rd & St Aubyn St, New Plymouth

## TARANAKI'S 4WD CENTRE - QUALITY AND SERVICE



"NZ New"  
\$72,990

2017 Volvo XC90  
D5 AWD MOMENTUM 2.0D  
7 seater, T/DSL, 65kms



"Style"  
\$49,990

2015 Land Rover Discovery  
Sport, 2.0 S14 HSE 7 SEATER  
Auto, Petrol, 31kms



"7 seater"  
\$129,990

2020 Audi Q7 50 TDi  
210KW QUATTRO,  
Auto, 26kms



"7 seats"  
\$45,990

2017 Toyota Highlander  
4WD GXL 7 Seater, Auto  
Petrol, 76kms



"Hard to find"  
\$34,990

2009 Toyota Hilux  
EXTRA CAB SR5 4WD  
5spd, T/DSL



From  
\$41,990

2013/17 LANDROVER EVOQUE  
2 to choose - blue and black



"New model"  
\$84,990

2018 Volkswagen Touareg  
R-LINE 3.0 TDi, 40kms



"Nice colour"  
\$28,990

2016 Subaru XV 2.0i-L  
EYESIGHT 4WD WAGON  
Auto, Petrol, 61kms



"Family coaches"  
\$19,990

2010/11 MITSUBISHI DELICA  
4WD Coaches. 2 to choose



"Smart"  
\$14,990

2012 Mazda Axela Sport 2.0S  
Auto, 96kms



"Sporty"  
\$21,990

2010 BMW 135i TWIN  
TURBO COUPE, Auto,  
3.0L, 85kms



"7 seater"  
\$76,990

2020 Toyota Land Cruiser  
Prado, Black, TX L-Package  
3.0 T/DSL'



"Mint!"  
\$16,990

2010 Jaguar XF 3.0  
Auto, P/S, Leather



"Versatile"  
\$14,990

2012 Toyota Corolla Fielder  
1.8S, Petrol, Auto, 67kms



"Great Commercial"  
\$33,990

2013 Toyota Hiace ZL 3.0  
T/DSL, 5spd, 142kms



"Luxury Coach"  
\$16,990

2009 Toyota Vellfire 3.5Z  
PLATINUM SELECTION



"Wow!"  
\$30,990

2017 Subaru XV 2.0i-L  
EYESIGHT 4WD WAGON  
62kms



"Massive"  
\$42,990

2018 Toyota Hiace DX 2.8 T/DSL  
Extra long/high, 46kms,  
Commercial or Camper!



"Superb Drive"  
\$46,990

2014 BMW X5 M/SPORT  
X DRIVE 35D, Twin Turbo  
Diesel



"2.0 Turbo"  
\$19,990

2011 RENAULT MEGANE  
RS 250, 6spd, Sports Model



"Luxury Specs"  
\$56,990

2015 VW Touareg  
R-LINE 3.0 TDi, Auto,  
Diesel, 82kms

**H) Hareb Deken Motors**  
TARANAKI'S 4WD CENTRE - VISIT WWW.HAREBDEKENMOTORS.CO.NZ

Ph (06) 759 9943  
FREEPHONE 0800 289 493  
A/H Mike Hareb (06) 752 7697 Ton Deken (06) 752 7405  
RMVT

# Opunake Library Plus book review

## A Valley Dream by Anna Jacobs

It's been a while since I've reviewed a book here, life got so busy I really wasn't reading much at all. (I can hear the collective gasps – shocking isn't it?) I did get to read this first book in the Backshaw Moss series by Anna Jacobs. I always enjoy her books and have read previous novels set in the village of Ellindale in England during the 1930s. The author always writes an uplifting story which has a happy ending after a struggle and includes both romance and suspense.

This time we meet Bella, who is a 36 year old spinster left under the care of the horrible abusive cousin Thomas Beaton. The Beaton family have lovely children whom Bella helped raise and luckily they are different from their snobby nasty parents. Bella has lived in this abusive arrangement for too many years, treated as nothing but a drudge and has become mousy and downtrodden. Then one day the will of another relative, James Beaton is read. It

comes as a shock to Bella and even more of the shock to the nasty cousins that he has left Bella a house, a little money and some costume jewellery. James inherited three homes from his godmother with instructions to never let Thomas have any of them and to choose whom he thinks would benefit most from inheriting. Thomas is furious and threatens to throw Bella out if she doesn't let him have control of the house and her finances. Bella sees a chance at freedom, finds her courage, leaves the house that very day with only what she came with and heads to Backshaw Moss. What she finds there, on the edge of the slums is not the cottage she was expecting – nor was she expecting to meet the Harte family or widowed father of three, Ryan. Not everyone is kind however, or on Bella's side and Thomas doesn't let go without a fight, a nasty one. Bella faces a number of challenges trying to set

up her new home, make the place liveable and get decent tenants for the other rooms so that she doesn't have to worry about running out of money.

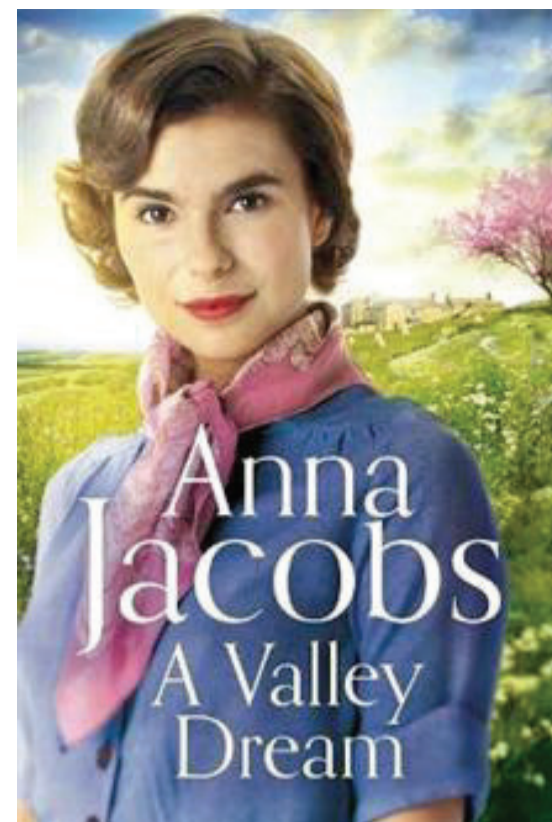
It's a great read for Anna Jacob fans and anyone who enjoys historical sagas set in England. The story highlights the plight of unprotected women during that period in time, no matter how old they were. It's a nice hardback with good clear print which makes for a relaxing read with a cup of tea and a snack. The library has the next book in the series on order which I am

happy about because we still don't know who inherited the other two houses that stand either side of Bella's place and I am very curious!

You can reserve this book at any South Taranaki LibraryPlus branch in person, or call us on 0800 111 323.

You can also visit <https://ils.stdc.govt.nz/>

Maria Brewerton  
Kaiārahi Whare Pukapuka  
- Opunake/Manaiā | Branch  
Librarian - Opunake/  
Manaiā



## On this month in history

### Composer Douglas Lilburn born

On November 2, 1915 New Zealand's foremost composer Douglas Lilburn was born in Whanganui. He spent much of his formative years at the family farm *Drysdale* on the upper reaches of the Turakina River.

Some of his compositions

include *Aotearoa*, *Landfall in Unknown Seas*, the *Drysdale Overture* and *A Song of Island*. He often collaborated with notable writers such as Allen Curnow, Dame Ngaio Marsh, Denis Glover, and Alistair Campbell. He was also in a romantic relationship with artist Rita Angus.

After studies at Canterbury

University he studied at the Royal College of Music in London and was influenced by Ralph Vaughan Williams.

Eventually, he returned to New Zealand to take up a position as lecturer at Victoria University in 1947. By 1970 he held the elevated post as Professor. He developed the Electronic Music Studio whilst there.

He died on June 6, 2001

aged 85.



Douglas Lilburn



### South Road, Opunake

#### 42.3Ha of centrally raced flat land

This 42.34ha (more or less) of suburb flat land on SH45, south of Opunake comes with many options. Whether it be as a maize block, runoff or cut and carry supplement block. This property is centrally raced and very well fenced. With water supplied from the Cold Creek water scheme you would have a reliable and cost-efficient supply of clean water. The property is in great heart thanks to good amount of organic inputs, fertility levels are very good. Continue farming organically for the premium it offers in meat/milk or supplying organic supplements or revert to a traditional system if you desire. A block that is extremely easy to manage and a pleasure to present. CV \$2,420,000.

[bayleys.co.nz/2600893](http://bayleys.co.nz/2600893)

#### Price by Negotiation

View 10.30-11am Mon 29 Nov or by appointment

John Blundell 027 240 2827  
[john.blundell@bayleys.co.nz](mailto:john.blundell@bayleys.co.nz)

SUCCESS REALTY TARANAKI LTD, BAYLEYS, LICENSED REAA 2008

**BAYLEYS**

# RECEIVE A 'BUY LOCAL' VOUCHER

WHEN YOU LIST & SELL WITH BAYLEYS



Get a Buy Local voucher when you list and sell with Bayleys between 1 August and 31 December 2021.

Not only will you get a great result when you sell with Bayleys, we will also give you a voucher towards your next local shopping trip! For every \$2,000 of the sale price achieved you will earn \$1 towards a Buy Local voucher\*, to spend at any Taranaki business of your choice. Support your local community through Bayleys.

For more information, contact us today.

#### New Plymouth

M 06 759 0415  
E [info@bayleystaranaki.co.nz](mailto:info@bayleystaranaki.co.nz)

#### Hawera

M 06 278 1630  
E [info@bayleystaranaki.co.nz](mailto:info@bayleystaranaki.co.nz)

SUCCESS REALTY TARANAKI LTD, BAYLEYS, LICENSED UNDER THE REA ACT 2008

**BAYLEYS**

ALTOGETHER BETTER

Residential / Commercial / Rural / Property Services

# Surfing for farmers



summers evening”, said Bayleys Taranaki General Manager Dean File.

Last summer Fitzroy Beach joined the list of popular surf spots taking part and with the support of local businesses and the Surf Riders Club, they are back again Tuesday evenings from 5.30pm on December 7 for the summer.

This year Opunake will also be hosting the events and start the season off on Thursday December 2 at 5.30pm.

“It’s very rewarding to be able to support Surfing for Farmers and the sheer joy on the faces of those taking part as they catch their first wave, or simply enjoy cooling off in the ocean is truly priceless”, said Dean.

Bayleys Taranaki is very focused and committed supporting a wide range of over 40 community groups including Make a Wish, Taranaki Chamber of Commerce, Multi-Ethnic Community events, Flanagan Cup, Taranaki Rugby, Bowls Taranaki, New Plymouth Surf Riders Club, Taranaki Rural Support Trust, Dairy Industry Awards, Taranaki Retreat and Women’s Refuge.

At Fitzroy Beach from 5.30pm on December 7 for the summer. Opunake will also be hosting the events and start the season off on Thursday December 2 at 5.30pm.

Bayleys Real Estate’s commitment to the community continues and has been a big part of bringing Surfing for Farmers to the region. Surfing for Farmers started with Bayleys in Gisborne three years ago and now has been established in

many coastal spots across New Zealand. It was set up to relieve some of the stress that farmers face and deal with, often working in isolation on a daily basis. “Quite simply, Surfing for Farmers is an encouragement to get off farm, meet up with some likeminded rural

people and have a go at something new. To top that off it’s always enjoyable to have a drink and bite to eat from the BBQ on a



## Join us for Surfing for Farmers at Fitzroy Beach, Taranaki!

**Where:** Taranaki, Fitzroy Beach

**When:** 5.30 - 7.30pm, Tuesday 7th December for 2 weeks, restarting 18th January until the end of summer.

**Call to register:** Mark Dwyer **021 528 263** or Dean File **021 544 364**



Surfing for Farmers is the opportunity to get you off the farm for a couple of hours each week during this busy time of year.

Join us weekly during the summer months; surfboards, wetsuits and coaching is provided followed by a BBQ, refreshments and a debrief.

**There is no charge, so no excuse not to come!**



For information and event updates visit: [facebook.com/surfingforfarmers](https://facebook.com/surfingforfarmers)



All farmers registered this season go in the draw to win a **WOOL BLEND SURFBOARD!**

THANKS TO OUR NATIONAL SPONSORS



THANKS TO OUR LOCAL LEGEND SPONSORS





# OPUNAKE HIGH SCHOOL

## Celebrating student success

### Principals Address



**Mā te whiri tahi, ka whakatutuki ai ngā pūmanawa ā tāngata.**

*Together we weave the realisation of our students' potential.*

This is absolutely what we, as a community, have done during this challenging 2021. A thousand friends and whanau of the kura tuned in on 11th November at 11am to watch our stunning senior students receive their well earned certificates and awards.

Our akōnga have held themselves with grace, dignity and mana throughout this year, and this was exemplified during our 2021 Senior Prizegiving. Each and every prize winner, and student has acted with resilience, and shown **hei Whakapiki mauri** (inner strength), to be able to tenaciously continue with their studies whilst the future has been so shifting, and so uncertain.

The powerful haka at the end of our prizegiving resonated with aroha (love) and whanaungatanga (kinship) for our graduating Year 13 students, who are now to go forward and make positive changes, in this rapidly changing world.

**Mā te huruhuru ka rere te manu**, adorn the bird with feathers so it may soar.

Our students are our **taonga** (treasures), and we cherish each and every one of them. As our seniors start to round up the year with exams, all the staff here wish you the very best of luck in your assessments, and a wonderful, well deserved holiday.

To our Year 13 leavers from all the staff of Te Kura Tuarua o Opunake; You are, and always will be, truly treasured.

Kia kaha, Kia maia, Kia manawanui

**Andrea Hooper Carr**  
Principal



Mrs Andrea Hooper-Carr recognising success during her Principals address and congratulating Dinah Symons on being awarded Dux.

### Senior Prizegiving 2021

Unfortunately our Senior Prizegiving was held this year without friends, whanau and the wider community present. This situation was ultimately out of our control, and while it ran like every other prizegiving we've ever had, Head Girl Madeline Symes summed it up best when she made note during her speech that for all of her life, those that have supported her most had been there, sadly this year they weren't in the audience and that just felt weird. Prizegiving was the same, but different.

We had a huge amount of people log on to our Livestream, well over 100 households connected, with nearly 1000 views now. This is still available for those who haven't yet seen it on our YouTube channel.

Well done to all our students on their great attitudes and awhi towards one another. Congratulations to all our award winners on all their achievements in another challenging year.

### Special Awards

#### ART & CULTURAL

- Christine C.P.S. Trophy Senior Public Speaking  
**Lexi McQuaig**
- Opunake High School Prize Excellence in Year 13 English Critical Thinking  
**Elise Dixon**
- Joy Williamson Cup Music  
**Madaline Symes**
- Te Ratahi Ratahi Taonga Kaitātaki Tāne  
**Thomas Tito-Green**
- Talia Maree Patene Memorial Trophy Female Leadership  
**Keesha Craig, Jazlin Marsh**
- Te Haumoana Taonga Kapahaka Leadership  
**Marama Mohi**
- Te Whiwhia Trophy Manu Kōrero Speech Competition - Senior English  
**Pae Taylor-Pou**
- Egmont Community Arts Council Award Performing Arts  
**Johan Guttenbeil-Smith**
- Egmont Community Arts Council Award Cultural Arts Cup  
**Jazlin Marsh**
- Egmont Community Arts Council Award Visual Arts Cup  
**Dinah Symons**
- Egmont Community Arts Council Award Musical Composition  
**Jazlin Marsh**
- Egmont Community Arts Council Award Arts & Culture Supreme Award  
**Dinah Symons**

#### SPECIAL AWARDS

- McKay Cup Head Girl  
**Madaline Symes**
- Crawford Cup Head Boy  
**Pero Brophy**
- OHS 2013 Prefect Cup Most Outstanding Prefect  
**Joe Gibson**
- OHS Board of Trustees Cup For Student BOT Representative  
**Pero Brophy**
- Bolger Cup For Leadership of the Student Council  
**Madaline Symes**
- James Trophy All Round Contribution to the School, Year 9 - 11  
**Thomas Tito-Green**
- Woolford Cup Sportsman of the Year  
**Cameron Quinnell**
- Nicholas Cup Sportswoman of the Year  
**Jorja Symes**
- James Cup All Round Contribution to the School Year 9 - 11  
**Jorja Symes**
- OHS DREAM Trophy For DREAM Values in School and Extra-Curricular  
**Elise Dixon**
- Minister of Education Cup For Services to the School  
**Dinah Symons**
- The Combined Churches Award For Outstanding Character  
**Joe Gibson, Jazlin Marsh**
- Wotton Award For Diligence and Commitment to the School  
**Christelle Centeno**
- Griffith Merit Cup For Best All Round Girl  
**Madaline Symes**
- Graham Sulzberger Memorial Cup For Best All Round Boy  
**Pero Brophy**
- Prime Ministers Vocational Excellence Award  
**Brody Fox**
- Te Paewai o Te Rangi University of Waikato Scholarship for Outstanding Academic Achievement  
**Pero Brophy**
- Ko te Tangata University of Waikato School Leaver Scholarship  
**Elise Dixon**
- Lena Sharrock Award for Runner-Up in Year 11 Subjects  
**Lexi McQuaig**
- Pam Morris Cup & Medal for Excellence in Year 11 Subjects  
**Holly Gasson, Jorja Symes**
- Sue Spindler Award Runner-Up in Year 12 Subjects  
**Lexi McQuaig**
- Sue Spindler Cup & Award Excellence in Year 12 Subjects  
**Lorin Symes**
- Taonga Te Maunga Tū Recognising High Levels of Academic Achievement for Senior Māori Students  
**Keesha Craig**
- OHS Medal and Award For Proxime Accessit  
**Elise Dixon, Joe Gibson**
- McNeil Adams Cup, OHS Medal and Ikaroa Lodge Award For Dux of the School  
**Dinah Symons**

### LOOKING FOR SOME EXTRA NEWS?

[@OpunakeHighSchool](#)

CHECK OUR WEBSITE or SOCIAL MEDIA

[@OpunakeHigh](#)



School Apps NZ

To Download our app: Go to the App Store on your Apple or Play Store on your Android device and search 'SchoolAppsNZ'. Open the application and then search for 'Opunake High School' to find us.



Cultural Award Winners (from L): Thomas Tito-Green, Pae Taylor-Pou, Marama Mohi, Lexi McQuaig, Jazlin Marsh, Keesha Craig

# SPECIAL EDITION

## and kotahitanga

### OPUNAKE HIGH SCHOOL CONTACT DETAILS

P: 06 761 8723  
 Attendance: 0800 288 363  
 Tasman Street, Opunake 4616  
 PO Box 4, Opunake 4645  
 www.opunake.school.nz  
 admin@opunake.school.nz



Madaline Symes & Pero Brophy



Jorja Symes & Cameron Quinnell



Jorja Symes & Holly Gasson



Lorin Symons & Lexi McQuaig



From L: Wotton Award winner - Christelle Centeno, Combined Churches Award winners - Jazlin Marsh & Joe Gibson



2021 Dux - Dinah Symons (L) with sister Lorin.

Dinah was also our recipient of the Minister of Education Cup for services to the school, as well as the Egmont Arts Council Visual Arts Cup and overall Supreme Award.



Egmont Community Arts Council winners; Johann Guttenbiel-Smith, Madaline Symes & Dinah Symons

## Sports Awards

- |  |  |
|--|--|
| OHS - Clough Cup<br>Most Consistent<br>Girls Hockey Player<br><b>Jorja Symes</b>               | Opunake Board Riders<br>Club Trophy<br>Most Outstanding Surfer<br><b>Jordan Herbert</b>              |
| AFA Hockey Trophy<br>All Round Contribution<br>Girls Hockey<br><b>Madaline Symes</b>           | Weir Trophy<br>Womens Surfing<br><b>Aroha Turnbull</b>   |
| B and D Tippett Cup<br>Achievement in Boys Hockey<br><b>Jayden Forsyth</b>                     | Paula Dimock Cup<br>Contribution to Girls Soccer<br><b>Ella Bright</b>                               |
| Clive Burkitt Trophy<br>Outstanding Commitment to Boys<br>Hockey<br><b>Richmin Hughson-How</b> | O AFC Trophy<br>Most Outstanding Player Soccer<br><b>Ayshnal Reddy</b>                               |
| Osborne Cup<br>Most Outstanding Swimmer<br><b>Richmin Hughson-How</b>                          | Whitehead Trophy<br>Most Points Scored,<br>First XV Rugby<br><b>Brayden Shaw,<br/>Kaleb Paton</b>    |
| Hill Trophy<br>Best Defensive Girl Basketball<br><b>Bethany Cook</b>                           | CRFC Bernie & Margaret Fleming<br>Cup<br>Best Team Member,<br>First XV Rugby<br><b>Thomas McLean</b> |
| Te Kiri Primary School Trophy<br>Most Valuable Girl in Basketball<br><b>Arna Bright</b>        | Hislop Trophy<br>Most Promising Player,<br>First XV Rugby<br><b>Brody Fox</b>                        |
| OHS Basketball Langton Family<br>Trophy - Most Dedicated Player<br><b>Ella Bright</b>          | OHS - Sofve Cup<br>Most Improved Player,<br>First XV Rugby<br><b>Teague Mullin</b>                   |
| DeBique Trophy<br>Best Defensive Basketball<br><b>Liam Kidd</b>                                | Player of the Year,<br>Girls Rugby<br><b>Bethany Cook,<br/>Sharna Tito-Green</b>                     |
| Calvert Trophy<br>Most Valuable Boys Basketball<br><b>Cameron Quinnell</b>                     | Dave Potter Memorial Cup<br>All Round Contribution,<br>Girls Rugby<br><b>Ella Griggs</b>             |
| Langton Family Trophy<br>Most Dedicated Team Player<br><b>Pero Brophy</b>                      | Fleming Julian Cup<br>Player of the Year,<br>First XV Rugby<br><b>Matt Clark</b>                     |
| Tamatea Cup<br>Most Distinguished Netballer<br><b>Jamie Wineera</b>                            |  |
| Contribution to Senior "A" Netball<br><b>Miriama Roach</b>                                     |  |

### CAPTAINS

- Young Cup  
Captain, Girls Hockey  
**Madaline Symes**
- Woolford Cup  
Captain, Mixed Hockey  
**Richmin Hughson-How**
- Lynne Morgan Memorial Trophy  
Captain, Girls Basketball  
**Ella Bright**
- Opunake High School Cup  
Captain, Boys Basketball  
**Scott Quinnell**
- Opunake High School Cup  
Captain, Netball "A"  
**Jamie Wineera**
- Taylor Cup  
Captain, Girls Soccer  
**Ella Bright**
- Clement Cup Cup  
Captain, First XV Rugby  
**Tyran Jones**
- The YEP Cricket Cup  
Captain, 1st XI Cricket  
**Pero Brophy**
- Opunake AFC Cup  
Captain, Boys Soccer  
**Jaden Siciliano**

### CHAMPIONS

- Pennington Cup  
Senior Girls Athletics Champion  
**Lia Sefton-Zachan**
- Clement Cup  
Senior Boys Athletics Champion  
**Jaden Siciliano**
- Opunake High School Cup  
Int. Girls Athletics Champion  
**Jorja Symes**
- Opunake High School Cup  
Int. Boys Athletics Champion  
**Jaree Summerfield**
- Jarman Cup  
Senior Girls Cross Country  
Champion  
**Lia Sefton-Zachan**
- Old Pupils Assn Cup  
Senior Boys Cross Country  
Champion  
**Jaden Siciliano**
- Opunake High School Cup  
Int. Girls Cross Country Champion  
**Lexi McQuaig**
- Alex Harvey Cup  
Senior Girls Swimming Champion  
**Ella Bright**
- Cassie Cup  
Senior Boys Swimming Champion  
**Joe Gibson, Richmin  
Hughson-How**
- Sulzberger Cup  
Int. Girls Swimming Champion  
**Arna Bright**
- Hughson Cup  
Int. Boys Swimming Champion  
**Charlie Rankin**

He waihangatanga o te tangata pai i roto i tenei ao hurihuri

# Effluent management: working with specialists saves more than money

Setting up or improving your effluent management system is an important consideration, and something you want to get right the first time. Trust plays a large factor in who you choose for advice and to manage your project, and it's important to work with someone you feel confident in. While there may be a lot of different people who can do the job, here are a few reasons why choosing a specialist can save you more



LLOYD THOMAS

than just money...  
**Planning and strategy**  
The importance of a good



It pays to get some specialist help.

plan and strategy for your effluent system should not be overlooked. Even if you're only looking to upgrade one part of your system, or one piece of equipment, the best results come from looking

at how everything fits into a system, and how that can be most efficient for how the farm operates. A specialist will have the knowledge and experience to advise on this, and should also have a good

grasp on area specific factors like council compliance. Getting it right will save you money, getting it wrong can be very costly.

**Equipment**  
You not only want

equipment that works, but equipment that works efficiently and effectively for your situation. Specialists will have good experience working with different situations requiring different combinations of equipment and working with a variety of equipment suppliers. They are in the best position to direct you towards the best equipment for your situation – even if it's not their own. This reflects not only functionality, but quality, price, parts and after sales support.

### Project management and installations

You've got enough on your plate running the farm, and a specialist should be able to take the hassle out of project management. They will have the knowledge and experience to get everything in place, organise contractors, negotiate pricing, and make sure it's all done right at no extra cost to you. And you have a trusted contractor you prefer to use, great. Who better to work with than someone who knows the farm well?

You've got nothing to lose in talking with effluent management specialists about your project. You'll receive additional knowledge, experience and service at no extra cost, plus it's in their best interests for you to achieve an outstanding outcome.

Lloyd Thomas  
Nevada Effluent  
Management Specialist

## NZ FARMERS LIVESTOCK

For all your  
Livestock requirements  
Servicing the Coast

### Contact

Bryan Goodin - 027 531 8511

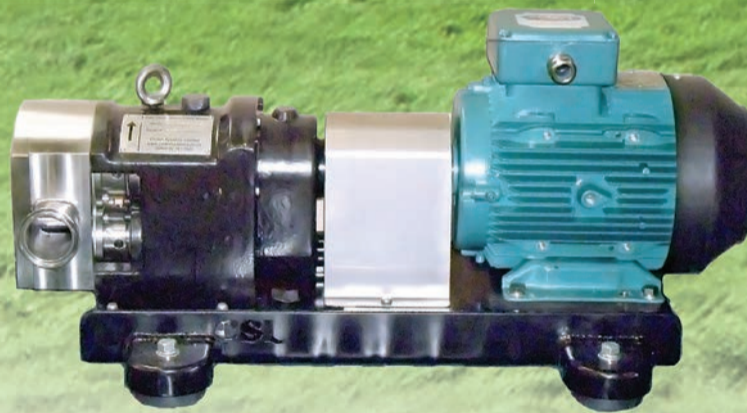
Sheldon Keech - 027 222 7920

# Lower Milk Solids Damage Improve Milk Cooling



## MILKFLOW

The CSL Milkflow Milk Pump Controller improves returns by reducing milk solids damage and optimising primary cooling.



## ROTARY LOBE PUMP

Combined with the CSL Milkflow Controller, the CSL Lobe pump accommodates the large wash volumes required in today's dairy sheds without compromising milk quality.



Contact us

0800 10 7006

www.corkillsystems.co.nz

Local news, Local people, local businesses, local sport, local arts and events. Delivered free around the mountain every fortnight.



OPUNAKE & COASTAL  
**NEWS**  
06 761 7016





Young stock.

# Are parasites eating into your profit?

“34% increase in number of grazing days and 38% decrease in average liveweight of lambs over three years with drench resistance.” (Beef + Lamb NZ, Nov 2021). These are the results of a local Taranaki farmer dealing with the impact of drench resistance. Parasitologist Dave Leithwick says drenching is entrenched in the farmer psyche to control parasites and it’s become the go to. This has resulted in an overuse of chemical on farm, to the point where every cattle farm would have some level of resistance to Cooperia. Parasite resistance is now the norm rather than the exception.

In the sheep sector alone it is estimated that undetected drench resistance is costing almost \$50 million a year. Unfortunately, resistance on your farm will be occurring long before you start to see a problem. 2006 surveys showed that 94% of beef farms were resistant to at least one drench family and high levels of drench resistance to all drug families were present on sheep farms. However, 15 years on farmers still use drenching as the go to management strategy. Frustrating? Yes.

Cooperia is inherently resistant to the “mectin” drenches. Furthermore, this worm we never used to worry about much, appears

to be developing more of a disease-causing ability. Where once it didn’t cause production losses it certainly appears to be doing so now. Although there is the specific resistance risk of Cooperia there is also the more general development of resistance for other worms such as Ostertagia.

The current advice to slow or prevent the onset of drench resistance is to look after your susceptible worms. This concept is known as refugia. Adult animals are net removers of infective larvae on pastures. Yes, they harbour a small population but generally their immune systems kill or dramatically reduce reproduction of these worms. We can use adult stock to clean up pastures and provide susceptible worm eggs for the young to repopulate themselves. Therefore, if drenching of adult stock is still being practiced, we have no opportunity to allow this concept of refugia to operate and we are buying a one-way ticket to drench resistance.

Herds or flocks that are underweight, have less than adequate feed, are subject to high pasture contamination by infective larvae, and are subject to trace element deficiencies, will have larger numbers of poorer condition animals harbouring greater numbers of internal parasites. So, it makes sense that giving such animals a drench will assist recovery



EMILY HOUSE

and a production response can be expected.

However, if your adult herd or flock has any more than about 10% of animals in this class then the whole herd/flock has fundamental nutritional issues. It’s these issues that need to be addressed if you want to improve the performance of your herd/flock.

Whole system farm management options for all stock classes include:

- Carrying out a full faecal egg count reduction test to determine resistance risk
- Addressing underlying nutritional deficiencies
- Diversifying pasture swards
- Practicing refugia
- Minimising drenching of adult stock
- Managing stock classes to reduce risk

Knowing that parasite resistance is now the norm rather than the exception

we’ve got a chance to reset and make a new plan for growing this year’s crop of young stock. Using all these options to manage what is a naturally occurring phenomenon will give you the best chance of minimizing the impact of drench resistance and growing your young stock successfully.

*Emily House  
5th Business Agri*

## NZ FARMERS LIVESTOCK

**Bulls, Boners and Store Cattle making top money**

Contact  
Sheldon Keech - 0272227920  
Bryan Goodin - 027 531 8511

## NZ FARMERS LIVESTOCK

For all your Service Bull requirements, Bull Sales & Paddock Sales. Now buying in milk cows.

FOR MORE DETAILS contact your local NZFLL agent

Sheldon Keech - 0272227920  
Bryan Goodin - 027 531 8511

## Growing Great Youngstock



**DietDecoder**  
Advancing Animal Wellness

We can help you improve growth rates.

Please call us on 0800 765 854 we’d love to chat.  
[www.5thbusinessagri.nz](http://www.5thbusinessagri.nz)

# P.G. O’RORKE CONTRACTING

Ph 06 761 8308 or 027 451 4425

**NOW OPERATING A TUBE WRAPPER.**  
**30% saving on plastic.**  
**Phone for pricing.**





**CARRFIELDS LIVESTOCK SERVICING THE COAST**

**WANTED:**

- Frsn weaner heifer calves
- Beef weaner calves
- In-milk cows
- Store beef
- Dairy quotes for 2022 delivery

**CONTACT OUR TARANAKI TEAM:**

**Brent Espin 027 551 3660 or Daniel Hornby 027 636 2090**

**SOUTH TARANAKI**

**Daniel Crowley 027 215 3609**

**COASTAL/NORTH TARANAKI**

**Tim Hurley 027 414 6756**

**COASTAL TARANAKI**

**Colin Dent 027 646 8908**

**CENTRAL TARANAKI**

**Neko McDonald 027 429 8674**

**NORTH/CENTRAL TARANAKI**

If you would like to contribute to the farming section of our community paper, please let us know on 06 761 7016.

# Lord of the Tree rings rides again

Backyard tinker Joe Goodin has turned a former fertiliser truck into a massive mobile log splitter to help Taranaki farmers turn felled trees into winter fuel in record time.

Local engineer Marc Bessling designed the splitter with Joe and used computer modelling that ran a stress analysis through 70 million cycles up and down splitting wood with a 70-tonne push. The splitter was then professionally built by local company PACE Engineering using several sections of 30mm thick steel plate. Powered by a custom-built hydraulic power pack of 200lpm at 206bar, another local company Hydraulic Solutions came on board to plumb up the extensive hydraulic system.

Weighing in at around two tonnes, the truck is a very significant machine and will go practically anywhere and pull out logs from tricky places. Complete with a nice stereo and sun shade



Joe Goodin and the Lord of the Tree Rings.

umbrellas to keep a long day of honest graft as comfy as can be, the truck has earned the nick name "Lord of the tree rings".

This is Joe's second custom built log splitter. Joe built one about 12 years ago out of scrap metal and that cut many thousands of tonnes of wood.

The business started simply by word of mouth with the machine at one farm, neighbours driving by seeing such a huge splitter, then asking to stop in at their place and so on it would go. During summer Joe used to travel around the mountain cutting the wood for farmers. Built on the same safety principles as his last splitter there are no automatic hydraulic operations so as to keep the operator as safe and protected as possible.

Joe's last splitter would cut more than 50 cubic metres of wood in eight hours. This new machine has a 70 ton push with a larger 6 way splitting head that can smash two stacked rings into 12 pieces at once, and has so much power it can cut rings standing on their edge. Joe estimates the new splitter will split closer to 60 cubic metres of wood cut in eight hours.

Joe usually asks the farmers to supply a tractor and driver to keep pushing up rings to the cutting table to process

as much wood as possible. The lifting table allows rings 4 foot or more in diameter to easily be lifted up to the cutting table where the buournellie principle of 70 tonne hydraulic pressure works its magic, then the conveyor tips the wood straight into a waiting trailer.

Built for fun as a side-line project from Joe's international designing

subsea tools for the oil, gas and renewable energy sector, this is a standalone operation that will travel around the mountain with an operator to process massive amounts of fire wood and free up weeks' worth of work for farmers and lifestyle block owners so they can spend time doing what they want to do.

## HIRE THE LORD OF THE TREE RINGS



**TARANANKI'S LARGEST MOBILE LOG SPLITTER!**

Splits more than 50 cu/m in 8 hours just about anywhere on your farm.

Lifts and splits massive rounds straight onto your trailer.

\$200 per hour + GST including operator.

FOR MORE INFO, CALL JOE GOODIN  
TEL: 027 688 5372

**MALCOLM CAMPBELL LIVESTOCK**  
VISIT [WWW.MCLIVESTOCK.CO.NZ](http://WWW.MCLIVESTOCK.CO.NZ)

**STOCK FOR SALE**

- 180 Frsn X CRV Incalf herd of cows. Ave NZMI 125. Approx. 160 cows 2-8 old cows. 1st June delivery.
- 26 rising R2 Frsn X CRV Incalf heifers. Ave NZMI 155. Genuine replacement heifers from above herd.
- 27 top Frsn X Holdover cows. Incalf to Hereford bulls. Ave BW 158 PW 243.

**Service Bulls For Sale**

- Purebred Hereford Bulls
- Purebred Angus Bull

**Beef Weaners For Sale**

- Hereford X bulls, heifers and steers.
- Murray Grey bulls
- Frsn bulls

**STOCK WANTED**

- 35 Jersey Incalf heifers. Fully ID & well grown.
- Frsn or Xbred R2 Incalf heifers for immediate delivery.
- Beef Yearling steers & heifers. All breeds.
- Also, Dairy Herd & Incalf heifer quotes.
- Export Frsn Weaner Heifers. Paying top money.
- F12+, F8-11, & unrecorded Frsn.

CONTACT MALCOLM CAMPBELL  
027 2340635  
EMAIL: [MCLIVESTOCK@XTRA.CO.NZ](mailto:MCLIVESTOCK@XTRA.CO.NZ)

**CAMPBELL CONTRACTING LTD**

**DON'T ACCEPT A LIFT FROM A STRANGER!**

**Our Hiab truck is always available to give you a lift.**

*Truck and trailer for general cartage.*

*For all your cropping and silage needs.*

*Secure your hay, straw and maize silage early.*



Rusty 027 280 0743

[office.campbellcontracting@gmail.com](mailto:office.campbellcontracting@gmail.com)

[www.campbellcontracting.nz](http://www.campbellcontracting.nz)

**WATER BLAST CLEAN YOUR TROUGHS**

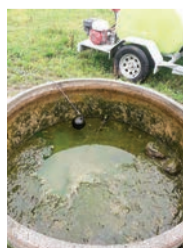
**FROM \$25 + GST PER TROUGH**

Fully insured.

Health and Safety/

Hazardous Substances certified.

Phone or text to book your clean today.



**CLEAN TROUGHS = HAPPY COWS = HAPPY FARMERS**



Ph/Text 021 207 3992

[spiffysanitising@gmail.com](mailto:spiffysanitising@gmail.com)



# Get kitted up in comfort at the Kaitake Community Sports Hub

The Kaitake Community Sports Hub (KCSH) say they are overjoyed to receive a grant of \$340,000 from the NZ Community Trust for the repair and renovation of our shared clubrooms at Corbett Park, Oakura.

KCSH Chairperson Garry Carnachan says "The clubrooms have fallen into significant disrepair and are below current building codes. A growing community has seen a resurgence in users of Corbett Park with rugby, football, and cricket clubs now fielding a total of five senior teams while the junior sports club has around 200 of its 350 members using the park regularly."

KCSH brings together the Kaitake Rugby Club, Kaitake Football Club, Oakura Cricket Club and Oakura Junior Sports Club, representing over five hundred and fifty individual members playing, coaching, and administrating sport in the Kaitake district generally - and specifically at Corbett Park. The aim is to complete renovation and remedial work on the clubrooms to bring the building up to code and maintain a fit-for-purpose community sport facility to serve all the people of the Kaitake District

KCSH was formed to bring the user codes and clubs together with the joint purpose of ensuring the collaboration necessary to operate together on a shared site. Without suitable facilities, future generations of rugby, cricket, and football enthusiasts would need to travel to town or down the coast to play with a consequent drop off in participation levels.

"Without the facility," says Carnachan, "there would be no community sports venue in this growing community and members would need to travel to the city with



A hub that caters for players of all ages ....



... and all codes.

consequent cost increases and drop off rates now and into the future. The four clubs have come together under a single entity to ensure a sustainable, fit for purpose sports facility in a rapidly growing community. This model and project is seen as a blueprint for the future of sport, particularly rural sport, in Taranaki by Sport Taranaki who have supported the development." "Sport in NZ has a unique ability to connect people, contributing to the physical, mental, and social health

of both individuals and the community. This is clearly evident on Saturday mornings with junior sport bringing parents and whanau on the side-lines and the wider community gathering down at the Park on a Saturday afternoon, supporting our teams and building our social fabric." "With a growing population and the barriers of cost and time on travelling to the city to join clubs inevitably leading to a drop in participation, retaining a community sport facility is

critical for our community being able to access the physical, social, and mental health benefits sport brings. This is particularly important to our young people, our tamariki and rangatahi." "This is a genuine community project for which there is a massive level of local support. KCSH have engaged with Ngāti Tairi, as mana whenua for the district, to seek hapu representation on the board as well as with NPDC as leaseholder and PKW as owners of the land."

## Sandfords Manaia Golf Club results

November 1. Monday night Ambrose. 1. Hakana Matata. 2. B.A. 3. Tui & Red. 4. Winks Rd. 5. West Coast Choppers.

November 6. Saturday Men. 1. Greg Marsh. 2. Jamie Johnson. 3. Bruce Duffus. Juniors. Gross. 1. Dreij

Climo. 2. Luke Norris. 3. Destiny Climo. Putt. Dreij Climo. Luke Norris. Destiny Climo. Max Bailey.

**NEW SHED** An exciting development in Value Farm Sheds.



We've been building quality Farm Sheds for over 50 years. Now we have this exciting new option: Clearspan Sheds. You can get an estimate + the plans simply by giving us a call!

**VALUE Building Supplies** Buy Better Build Better  
**BuildLink** Buy Better Build Better  
 1 KATERE RD, NEW PLYMOUTH PH: 06 759 7435 EXT: 715  
 JAMES STREET INGLEWOOD PH: 0800 245 535 www.valuebuilding.co.nz



For competitive pricing on all your rural cartage requirements - Give us a call today!

Taranaki wide

Phone 0800 707 404

# A lot happening at CoastalCare

Visitors to CoastalCare will notice some changes in coming months.

Five years after the CoastalCare Health and Community Centre opened its doors, an increasing demand for services has meant an increasing demand for more space.

As well as more people wanting to use the medical centre, the number of health providers based at CoastalCare has also increased. When the Centre opened in 2015 there were twenty health service providers. Now there are 32, with another two due to come on board next year.

“We already have more doctors and medical staff and the client list is constantly growing,” says Coastal Taranaki Health Trust chairman Steve Corkill. “These require more room, so services like the optometrist, podiatrist, optometrist physiotherapist and audiologist will move to their own dedicated rooms at the King Street end of the building and the Opunake Medical Centre will have the use of all of the Tasman Street end of the building.”

Steve says that with some of these services having very specialised and expensive

equipment it makes more sense for them to have their own dedicated rooms rather than having to alternate their rooms with other services.

Steve said the work will take place in stages, so as to keep disruption to a minimum.

Stage One will see the enclosing of the Medical Centre’s ambulance load-out bay area, where all COVID-associated work, including checking any respiratory symptoms and COVID testing takes place.

Coastal Care facility manager Aretha Lemon says that when COVID came along they needed a place where people with symptoms could be seen outside the Centre.

A marquee was set up, from where medical staff could go out and test people in their cars, but this had proved less than ideal in wet and windy conditions.

Stage One will involve building a solid garage which will replace the marquee.

“The car will park halfway in and all the stuff can be out there,” says Aretha. “This means everybody stays dry and safe.”

Work on this stage is due to start soon, with later stages taking place in the new year.



Stage One is due to start soon. From left: Coastal Taranaki Health Trust chairman Steve Corkill, facility manager Aretha Lemon and trustee Paul Bourke.

“It could take a year to finalise and complete the priority alterations, some parts may need to be held over a little longer depending on available finances and demand pressure,” says Steve.

Stage Two will cover

the King Street end of the centre and see the outside area next to the public toilets enclosed, as well as the addition of dedicated specialist rooms. Coastal Printers will move closer to the main entrance where they will be more visible,

making way for a dedicated room for the optometrist. There will be a counselling room as well as user-friendly and dedicated spaces for the audiologist, physiotherapist and podiatrist. The rooms from which they currently operate will be taken over by

the Medical Centre.

Trustee Paul Bourke said the local community had helped out with funding the centre when it was being built and the trust is asking for them to do so again this time round.

“We can’t rely just on grant money anymore, we need the community to assist with contributions to our community facility. We have just received a donation of \$10,000 towards the project from a local family for which we are very grateful.”

Paul says they will be getting in touch with farmers to ask if they would like to donate a cull cow. This had been a major part of their fundraising in the initial build up to the centre operating.

Meanwhile anyone wanting to see for themselves what’s being planned can drop by for the Open doors” showing between 10am and 12 noon on Saturday December 4, complete with sausage sizzle and refreshments.

“We will be showing people through the whole facility and giving them a rundown on what’s been done, what we need to do, and the adjustments that are going to be done,” says Paul.

## COASTALCARE

Haumaruru ki Tai - Health and Community Centre



### Invitation

It has been a little over five years since CoastalCare opened with 20 different health service providers.

We spent \$2.25 million to build a magnificent facility and thank to the massive generosity from our Opunake and Coastal community, plus grants received, we opened debt-free.

Today we have 32 different health service providers with two more flagged to start in the new year.

Room space at CoastalCare has now become quite congested and we need to make some improvements to the floor space usage to keep the services functional.

The first stage of our remodel is to enclose the Medical Centres ambulance load out bay area and it will become the Red Zone! All covid associated work, including checking any respiratory symptoms and covid testing will be serviced in this new area, this will be starting soon.

For the internal space alterations, the costings could be in the \$250k region, we have limited funds of our own and although grant monies will hopefully make some contribution, we believe we will need to meet this cost.

We also intend to run a cull cow/beef scheme, we will be communicating with the farming community in the near future

To show the community what we’ve been up to and intend to do in the near future, we are having an “open doors” showing or Sat Dec 4th 10am - 12 noon.

It will include a continuous sausage sizzle, with complimentary refreshments.

Thank you for your previous support, patronage, and interest in what we provide for your community.

The team at CoastalCare

### DID YOU KNOW?

CoastalCare offers for hire, quiet, private, well-appointed rooms for meetings, training opportunities and social gatherings.

Our permanent residents are: Opunake Pharmacy, Opunake Medical Centre, St. Johns Ambulance, Plunket, Health Board Services, Coastal Printers

For a full list of services and happenings here at CoastalCare find us on facebook or visit us at [www.coastalcare.co.nz](http://www.coastalcare.co.nz)

CONTACT ARETHA LEMON

Facility Manager on 06 761 8488

### CoastalCare Service Information List - Phone Aretha 06 761 8488

Service	Availability	Contact
Coastal Printers	9am – 5pm Wed and Fri Pickups and orders at reception on other days	06 761 8037
Opunake Medical Centre	8.30am – 5pm Mon - Fri	06 761 7324 - Reception
Opunake Pharmacy	8.30am – 5pm Mon- Fri and 9am – 12pm Sat	06 761 8144/0800 367 232
Plunket Nurses Community Karitane	Home visits and base clinics every Wednesday and Thursday	Marlene – 027 218 8214 Gaye – 027 275 7749
St John Ambulance	Ambulance service First Aid training courses Medical Alarm Service	Call 111 for an emergency Local base 06 761 8560 Alarms 0800 50 23 23
Alcohol & drug counselling	Tui Ora (by appointment) District Health Board (by appointment)	027 838 5167 06 753 7838
Browning & Matthews Optometrists	Twice monthly on a Thursday 9am-12pm – check with Coastalcare for confirmed dates	06 759 4126
Community Corrections	Every Tuesday by appointment	06 278 0650
Counselling	Leonie Landsheer (Fridays) Tui Ora – various (by appointment) District Health Board – various (by appointment) Te Ara Pae Trust - Gwenyth Richards – Anger, Family Violence and Sexual Violence (Mondays and Thursdays) Jacqueline Trotman – as needed	027 559 0982 06 759 4064 06 753 7838 06 278 6399 021 090 79597
Dairy NZ	Dairy Farming courses NZQA unit standards	0800 467 768
Foodbank	By Appointment phone first	06 761 8488
Hawera Budget Advisory Service	By appointment	0800 333 048
HIP – Health Improvement Practitioners	Free drop in clinic for patients registered with Opunake Medical Centre – Mondays & Fridays	Annie – 027 347 3028 Grace – 027 278 7530
Lisa Keen Audiology	Every Wednesday – 8am – 5pm	027 591 4222 - 0800 555 676
Mihis Place - Rongoa	Mihi Henry – Every last Thursday of the month 10am – 2pm	027 323 7534
Molemap	Every 3 <sup>rd</sup> Tuesday	0800 665 362
Ngati Ruanui Budget Services	By appointment	0800 766 537
Needle Exchange Program	9am -4pm each day on demand	06 761 8488
New Plymouth Physiotherapy	Tuesday and Thursday 8.30am -5.30pm	06 757 8800
Paediatrician	As needed by appointment	referral from doctor needed
Public Health Nurse	In schools Monday - Thursday	06 761 8090
Supporting Families in Mental Illness and Addiction – Home visits if needed	A free service for both children and adults who have a family member, whanau or friend who is impacted by a mental illness or addiction	06 757 9300
Taranaki Podiatry	The 2 <sup>nd</sup> Wednesday of the month	021 753 472
Taylor Dental Practice	Every Thursday 9am – 4pm	06 759 1047
Quit Smoking support	As needed by appointment: Tui Ora TDHB	06 759 4064 06 753 7838
Meeting Room to Hire	Call to enquire availability and cost	06 761 8488

Services for people with Diabetes and various heart conditions

Diabetes Educator, Dietician, Clinical Pharmacist and Social Worker - referral from doctor needed

# An artistic feast of watercolours at Lysaght-Watt Gallery

The exhibition of Pamela Lines at the Lysaght-Watt Gallery, entitled Watercolour reflection, past and present is outstanding and not to be missed. The exhibition continues until Saturday December 4.

The official opening was on Monday November 8 and was attended by a number of her relatives as the artist spent her formative years in Hawera as Pamela Dunlop. She showed early promise; in 1968 she was awarded first place in the Secondary and Intermediate Schools Art competition, which was organised by the Taranaki Society of Art.

Many of her paintings are of the sea and coast; constant changes in weather, sand and tidal movement impacts on her creative experiences at the beach.

Some paintings are abstract with an interesting interplay of colours suggesting movement, but others, such as Boatshed Rakiura/Stewart

Island are intriguingly detailed.

Quite a few paintings are entitled numerically; Pamela explains, "Each painting I do I number it and record the pigment colour for reference. I use that number rather than a title as I want the viewer to make the connection with the work and decide what and where it is. I don't want a title to limit the viewers imagination."

The paintings vary greatly in size. One of the smaller ones, which stood out, was entitled 629A which highlighted shades of green with much fascinating detail. This was definitely one of my favourites.

Of the larger works Across the Lakes with a myriad of greens and blues was most appealing. Others that caught my eye were The Wave with its interplay of blues and greens and 769 with blues, greens, reds and whites in captivating association.

Make sure you find time

to see the impressive watercolours of this talented artist. There is also a selection of greeting cards on offer which feature some Pamela's watercolours. For those who cannot attend this exhibition a look at [www.pamlines.com](http://www.pamlines.com) would be well worthwhile. As to the future, she is looking forward to pushing her work into new and experimental areas of movement and fluid creativity.

The Lysaght-Watt Gallery, Town Square, 4-6 Union Street, Hawera is open 10am to 4pm Monday to Friday and Saturday 10am to 1pm. Admission is free, however, a donation would be welcome.

*Rolland McKellar*



Above: Just one of the magnificent pieces of art on show at Lysaght Watt Gallery, Hawera. The exhibition will run until December 4.



Above: The watercolour 'Sea and Fence' can be seen at Lysaght Watt Gallery now.

**KAPONGA HOTEL**  
Cafe, bar, restaurant and accommodation. Under new management.  
The cafe will now be re-opened 9am-2pm Mon to Fri

Trading Hours: 11am to late 7 days a week  
BOOKINGS ESSENTIAL

**KAPONGA HOTEL** 49 Egmont St, Kaponga  
06 764 6770

Follow our Kaponga Hotel facebook page for daily promotions and updates.

- T AND H APPLIANCES HAWERA -

## BETTA SHOW EXPO

WE CAN'T GO TO THE SHOW...  
SO WE'RE BRINGING THE SHOW TO YOU!

LATE NIGHT THURSDAY 18TH  
OPEN UNTIL 3PM SATURDAY 20TH

**SHOW STOPPING DEALS!**

**HUGE SAVINGS ON JUDGE KITCHENWARE PRODUCTS**

**20% OFF STOREWIDE**  
(excludes Miele & product already on special)

GIVEAWAYS!

**HEAPS OF \$20 and under SECRET SANTA GIFTS**

**SPEND OVER \$200 & GO IN THE DRAW TO WIN OVER \$1000 WORTH OF PRIZES!**  
\*T&C apply

**DISHWASHERS FROM \$629**

**PANASONIC WASHING MACHINES FROM \$679!**

**BAR FRIDGES FROM \$369**

**Betta ELECTRICAL**

232 HIGH STREET HAWERA  
06 278 4338

# Join us for Grinchmas in Hawera

Need a bit of light relief in these Covid times? Then Opunake Players latest production, the pantomime 'Peter Pan', is just the thing for you. There's laughs a plenty, singing, dancing and a well known story presented by a team of enthusiastic actors and crew. Director Lisa Beynon is pleased with the progress and can't wait for opening night. "The cast and crew are amazing," says Lisa,

"They've worked really hard and I just know you're going to love it." Children of all ages will enjoy 'Peter Pan', one reason being the cast are children of all ages. "It's good to have some younger actors among the more, how shall I put it, seasoned members." one committee member was heard to say. Performance dates are December 2, 3, 4, 9, 10, and 11, curtain opens at 7pm. Note the early time,

so your little ones aren't up too late. There's also a matinee on December 11 at 1pm. See the ad on this page for ticket prices. These are now available at Sinclair Electrical. A big thank you to them for providing this service.

A note about Covid! We at Opunake Players aren't exempt from the rules so here's a reminder. You must sign in and wear a mask, audience will be social distanced in their bubbles, no interval and, sorry, no cuppa tea and a chin wag afterwards. Please leave the auditorium quickly, if you want to meet cast members you can arrange to do so outside. And a special Opunake Players rule, don't let these restrictions stop you from enjoying 'Peter Pan'.

Fun fact: The character James Hook, or in our case, Jane Hook, was named after



Denise Sallaway of Nursery Rhyme is one of the participating shops. She is looking forward to shoppers seeing her quality merchandise.

CALL OUR FRIENDLY SALES TEAM AT THE



OPUNAKE & COASTAL NEWS

23 Napier St, Opunake

06 761 7016

See how our high readership rate can work for you

## NURSERYRHYME

HAWERA'S OWN BABY BOUTIQUE

PREM-6YRS

CALL IN AND SEE OUR EXTENSIVE RANGE

*NurseryRhyme Ltd*

158 High St, Hawera

06 278 8035 • OPEN Mon-Sat

Follow us on Facebook

### CHURCH NOTICES

#### Opunake Co-operating Parish

Havelock Street, Opunake - St Pauls - 9.30am every Sunday  
Rahotu - Wesley - 11am first Sunday of the month

#### Okato Co-operating Parish

Okato - St Pauls - 10.00am, 1st and 3rd Sundays each month  
Okato - St Pauls - 5.00pm, Evensong, 2nd and 4th Tuesdays each month  
Oakura - St James - 10.00am, 2nd and 4th Sundays each month

#### Opunake Catholic Church

St Martins, Pungarehu: 8.30am every 2nd and 4th Sundays of the month  
Our Lady Star of the Sea, Opunake: 10am every Sunday  
Other areas  
Manaia - Sacred Heart - 1st, 3rd Sat at 5pm  
(2nd, 4th & 5th Sat at Hawera's St Josephs)  
Kaponga - St Patricks, Sunday 8.45am  
All welcome

#### St Patricks Catholic Church, Okato

Saturday Vigil 6.00pm - 1st, 3rd & 5th Saturdays

#### The Wave

Pentecostal Church 64 Domett St, Opunake  
Sunday Services 10.30am  
Women's Group 10am Tuesday  
Men's Group 7pm Wednesday  
Come along or contact  
Belinda Philp  
027 935 6191

#### St. Barnabas Anglican Church

141 Tasman St, Opunake  
Sunday Services 10am  
Communion 2nd, 3rd & 4th Sunday  
Prayer & Praise 1st Sunday  
Every 5th Sunday all 4 churches gather for a Combined Service

#### Okato Community Church

Meets 10.30am Sunday at Hempton Hall.  
Everyone welcome

## Peter Pan Set To Fly



Left:

The three women in Peter Pan's life. Left to right; Wendy (Brenna Johnson) who wants to mother him, Captain Hook (Michelle Julian) wants to catch him and Tinkerbell (Monica Wilson) wants him all to herself. Who gets her way? Find out at Opunake Players "Peter Pan."

A special event is planned for Friday November 19 (from 5pm to 7pm) in Hawera. Three local business people, namely Campbell of Caffeinate, Vicki and Lorelei thought that businesses could be open with specials on offer as well as the odd gift or two, customers could have a fun time in the town and even save some money. Campbell said at least 25 businesses have agreed to participate, so far - hopefully with more to follow.

"It should be an interesting night, a bit different and not quite Christmas." He hopes

that with the continuing stresses of Covid, the event should bring some certainly to local businesses.

If it is well supported Campbell says the trio intend to hold a further Grinchmas in December. He also hopes that two or three Saturdays could also be targeted over the festive season, but further details are yet to be confirmed. Watch this space.

Campbell is confident many people will come along to support the business community. "It will be a fun event where people can forget about the stresses of life, while still following the rules.

Advertise your event in the Opunake & Coastal News

Call our sales team on 06 761 7016

OPUNAKE PLAYERS AT THE PLAYHOUSE THEATRE PRESENT

# PETER PAN

DECEMBER 2 - DECEMBER 11 2021

Tickets \$20 Adult  
\$10 Children Under 13  
Under 5's Free on your knee.

Tickets available from 15 November at Sinclair Electrical and Refrigeration Opunake

Amanda Stone Productions  
- Live, Laugh, Perform -



# Vicar of Dibley, vintage comedy at its best

The Vicar of Dibley is right up there in terms of vintage British comedy.

Richard Curtis who co-wrote it with Paul Mayhew-Archer was interestingly born in Wellington, NZ and spent some of his childhood here. The Vicar of Dibley was written for Dawn French who plays the lead (Geraldine Granger), in the television comedy.

New Plymouth Little Theatre has staged some of the funnier episodes in their final production for the year.

These included a personal favourite when the lascivious Uncle Simon (played by Bryan Vickery) woos the vicar (only to later dump her) while an assortment of her male flock unwittingly frustrate his efforts. The hospitable vicar had hitherto welcomed her parishioners into her home. After various visitors and interruptions, when David, Jim and Frank arrive with a scrabble board and the vicar hasn't the heart to send them away, it's too much for Simon who finally makes his presence known. The embarrassed trio shuffle away but not before delivering some hilarious parting lines.

The endearing, finely drawn characters combined with a very funny script, makes the Vicar of Dibley,

as with a lot of great British comedies, so brilliant.

The lead Donna Yeats playing the lovable vicar, Geraldine Granger, did a great job and with her distinctive haircut and fat suit so closely resembled the original actor Dawn French it was almost uncanny.

I also thought Terry Darby as the somewhat confused contradictory Jim Trott (No, no, no...yes) really owned the part giving a very comical performance. I also enjoyed Alex McDougall's portrayal of the haughty, straight laced and long suffering Mr Horton who delivers some great lines. (When his dim witted son Hugo (played comically by Brad Duynhoven) newly married to the ditsy Alice announcing they have some news, his hopeful, hilarious response is 'You're getting divorced?')

Suzy Adair with her large bow planted on the top of her head managed to convey the silly but sweet Alice well. Glenys Horsfall as Letitia Cropley offering up her bizarre culinary delights was also good.

Though the coarse, sexually frustrated Owen played by John Lawson was good, I would have liked him to be a bit more rough and uncouth which would have



The cast from left. Owen Newitt (John Lawson), David Horton (Alex McDougall), Letitia Cropley (Glenys Horsfall), Hugo Horton (Brad Duynhoven), Alice Tinker (Suzy Adair), Bethany (Sophie Adair), Geraldine Granger (Donna Yeats), Simon Horton (Bryan Vickery), James (Eddie Yeats) Jim Trott (Terry Darby), Frank Pickle (John Collings).

further highlighted the contrast with the punctilious dapper 'old woman' Frank Pickle (though good perhaps a little underplayed by John Collings).

Brian Vickery as the heartthrob cad Simon had a lot of scope in his lovely, comical role.

The Christmas play within a play episode which

concluded the evening gave the entire performance a festive air and provided an opportunity to sing that old favourite Silent Night and bid all a merry Christmas meant they were packing a lot in; perhaps too much.

There were so many funny lines and innuendos. Perhaps inevitably, some performances suffered by comparison with the television ones.

An ambitious undertaking by the New Plymouth Little Theatre and lovely to see a great comedy adapted to the stage by Stella McCallum who also co-directed it with Mary Barron. A great choice, I enjoyed it.

The Vicar of Dibley continues its run at New Plymouth Little Theatre till December 11.

Bernice McKellar



Christmas is not far away  
Book your function with us now  
Ngati Ruanui Stratford Mountain House

Dinner, Bed & Breakfast vouchers  
available to purchase  
\$335 - an ideal Christmas gift

OPEN FROM 9am WEDNESDAY TO 9pm SUNDAY

Ngati Ruanui

STRATFORD MOUNTAIN HOUSE  
Ph 06 765 6100

Beaches - Gardens - Cafes - Restaurants - Walkways - Accommodation - Art

## Awesome Opunake

Play, Stay and Enjoy



Our Major supporters are:



Keep an eye on the Opunake Facebook page for regular updates.

### UPCOMING EVENTS 2022

- **OPUNAKE BEACH CARNIVAL:**  
Saturday 8 January, 2022  
Stalls, Hourly raffles, Big Dig, Pageants
- **2022 INTERNATIONAL FESTIVAL OF HISTORIC MOTORING:**  
Wednesday 19th January, 2022  
DESTINATION OPUNAKE

Opunake is our destination and lunch stop. The main street will be closed for the parking of 516 vintage vehicles built from 1906 to 1981 for public viewing.

**SUPPORT LOCAL, BUY LOCAL, BE LOCAL**

## EVERYBODY'S THEATRE OPUNAKE

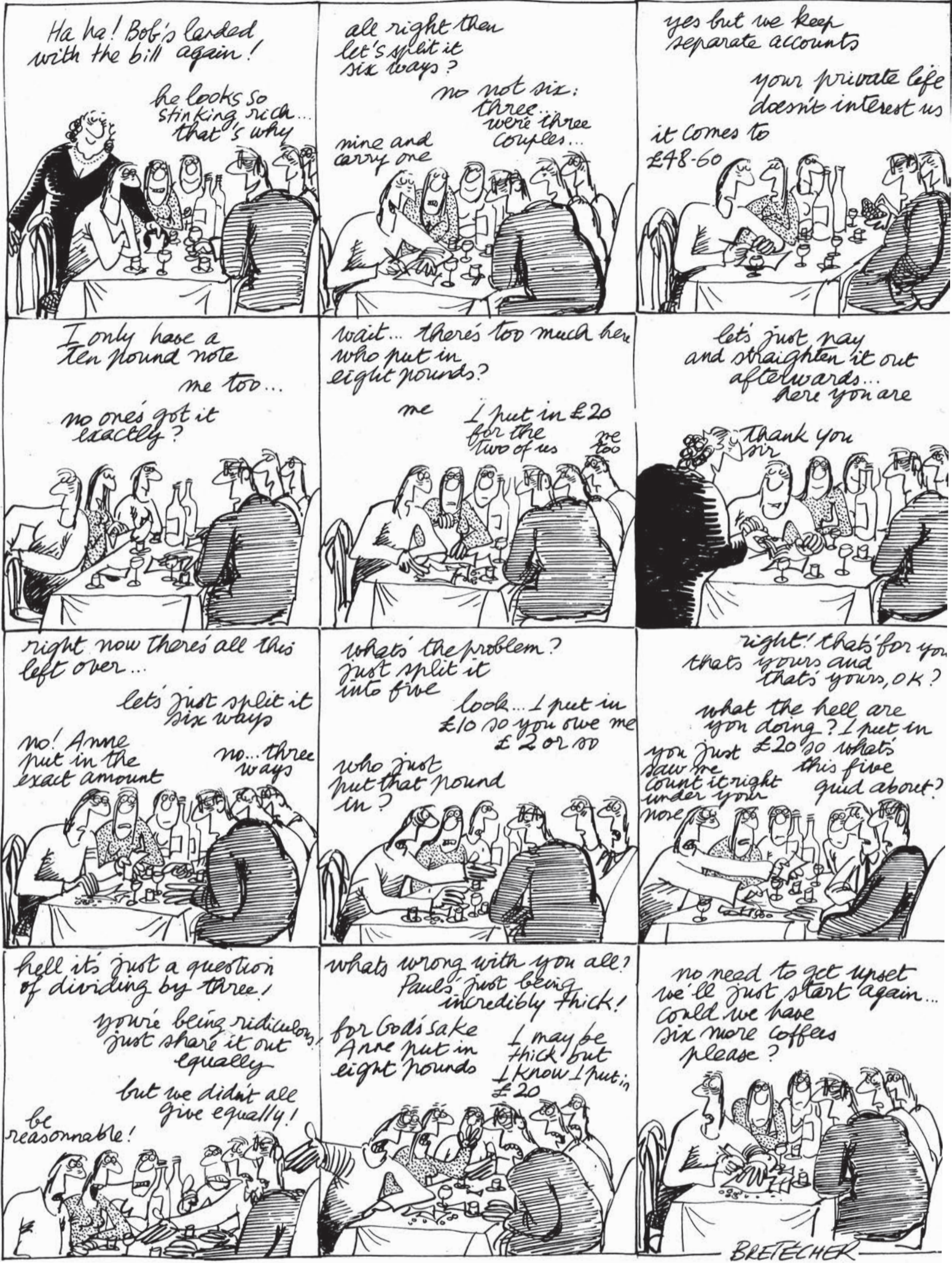
72 Tasman Street, Opunake - www.everybodystheatre.co.nz - Phone 027 383 7926  
November/December 2021  
Adults \$10, Students 4-16yrs and Senior Citizens \$8, Under 4 free

<p><b>POWER OF THE DOG</b> Western, Drama   2 hrs 6mins   R13:Animal Cruelty Sat 20<sup>th</sup> Nov 7pm</p>	<p><b>A BOY CALLED CHRISTMAS</b> Adventure, Family   1hr 43mins   PG Fri 12<sup>th</sup> Nov 7pm</p>
<p><b>BECOMING COUSTEAU</b> Documentary   1hr 32mins   M Sun 21<sup>st</sup> Nov 1pm</p>	<p><b>RON'S GONE WRONG</b> Adventure, Animated   1hr 46mins   PG Fri 19<sup>th</sup> Nov 7pm   Sat 27<sup>th</sup> Nov 1pm</p>
<p><b>JULIA</b> Documentary   1hr 35mins   Exempt Sun 21<sup>st</sup> Nov 7pm</p>	<p><b>WELCOME TO SMELLVILLE</b> Animated, Family   1hr 25mins   PG Sat 20<sup>th</sup> Nov 1pm</p>
<p><b>ETERNALS</b> Adventure, Sci Fi   2hr 37mins   M Sat 27<sup>th</sup> Nov 7pm</p>	<p><b>HARRY POTTER &amp; THE PHILOSOPHER'S STONE</b> Fantasy, Family   2 hrs 32 mins   PG Fri 26<sup>th</sup> Nov 7pm</p>



Stuck for a Christmas gift?  
Then grab a Centennial Book.  
Great value at just \$35 each.  
Support Local.  
Phone us now to reserve your copy.

# Division



## What's On Listings

**ONGOING**  
**Movies at Everybodys Theatre in Opunake:** Playing several days and nights each week. Refer timetable in newspaper.  
**MONDAYS:** Tainui Day Centre - St Barnabas Church Hall, 141 Tasman Street Opunake: Each Monday 10 am - 12:230 pm. Information call Jenny 7618080 or Glenys 6558025  
**Opunake Friendship Club:** Meeting last Monday of each month in Opunake Town Hall at 1.30pm. All welcome.  
**TUESDAYS**  
**Opunake Walking Group:** Every Tuesday 10am. Meet outside Club Hotel on Havelock St. Phone Margaret 027 477 5600 for more info if needed, or just turn up.  
**Life Drawing Group:** Weekly at the Emporium, 86 Tasman St, Opunake 7pm to 9pm. \$10 to pay for the model. If anyone is interested please call Marianne Muggeridge on 06 274 5713.  
**WEDNESDAYS**  
**Lisa Keen Audiology at Coastal Care, Opunake:** Wednesdays 9am - 5pm, for an appointment call 027 591 4222 - 0800 555 676  
**Okato & District Historical Society open every Wednesday:** At the Okato Community Trust Hall, 47 Cumming St, Okato. phone Meg on 06 752 4566.  
**Opunake Embroiders Guild:** Meet 2nd and 4th Wednesdays of the month, 10.30am-3pm at the Opunake Business Centre, Napier St, Opunake. Just come along or phone Sheryl 06 761 8769.  
**Okato Market:** In Hempton Hall, Okato 4.30 to 6.30pm.  
**Free singing experience with Taranaki Harmony Chorus:** Meet every Wednesday at Inglewood Mamaku Centre, 7-9.30 pm Phone Helen 021 296 0700.  
**THURSDAYS**  
**Coastal Young Farmers:** Meet 2nd Thursday of every month at 7pm at Butlers Reef Bar & Cafe, Oakura.  
**Taranaki Country Music Hall of Fame, Manaia:** Running every Thursday night from 7.30pm, 11 Surf Highway, South Road, Manaia.  
**FRIDAYS**  
**Eltham Business Association Friday Markets:** 9:30am to 1pm, Carpark of Touch Point, High Street, Eltham.  
**Singer Songwriters, New Plymouth:** Last Friday of the month at Little Theatre, 29 Aubrey St, NP from 7-11pm.  
**WEEKENDS**  
**The Historic Cape Light & Museum:** Open 11am - 3pm weekends, Bayly Road, Warea.  
**NOVEMBER 20,27**  
**Stratford Speedway Racing:** At Stratford Speedway. Racing starts at 7pm.  
**NOVEMBER 8 TO DECEMBER 4**  
**Pamela Lines 'Watercolour Reflections' exhibition:** At Lysaght Watt Gallery, Hawera.  
**NOVEMBER 15**  
**Opunake Sport & Recreation Trust AGM:** At Sandfords Event Centre, 6pm.  
**NOVEMBER 16**  
**Opunake Golf Club AGM:** At the Clubhouse, 7pm.  
**DECEMBER 2 TO 11**  
**Opunake Players Production of 'Peter Pan':** At the Lakeside Playhouse, Opunake.  
**DECEMBER 4**  
**Pungarehu Golf Club Lamb Tournament:** At Pungarehu Golf course from 9am.

## SHARING SHOTS

22 November to 17 December 2021



An exhibition of photographic images by Members of the **Stratford Camera Club** curated by Club President, Sue Morton

THE VILLAGE GALLERY 166 HIGH STREET, ELTHAM  
OPEN MON-SAT 10AM-3PM

## Stoney Oaks Wildlife Park



A nubian goat one of the residents at Stoney Oaks Wildlife Park.



**PUBLIC NOTICES**



**Auroa School**

734 Auroa Road, RD 28, Auroa, 4678  
office@auroa.school.nz

**Applications for Out of Zone Pupils**

Auroa School is a decile 8 full primary School (includes year 7/8 students) located in South Taranaki. Enrolment at the school is governed by an enrolment scheme, details of which are available from the school office.

The Board has determined that there are likely to be 10 vacancies available for Term 1, 2022.

Applications can be made by applying in writing to the school by either post or email and by visiting the school office.

**The deadline for applications is 3pm, Friday 10th December.**

If the number of applicants exceeds the number of places available, students will be selected by ballot.

**Shaun Kalin, Board of Trustees**



**SECOND RATES INSTALMENT**

Ratepayers are reminded that the last day for payment of the second instalment of rates for 2021/2022 without incurring a penalty will be **Wednesday 24 November 2021.**

**WD Crockett**  
Chief Executive

**OAONU WATER SUPPLY LIMITED**

**ANNUAL GENERAL MEETING**

Tuesday 23rd November 2021 at 6.00pm

at the Opunake Golf Club  
235 Namu Road, Opunake

**TRADES & SERVICES**



**P.D. FLEMING LOGGING LTD**

Forestry rigged & certified 33 ton loader, National Certificates in Forest Operations, Health & Safety approved. Free assessment on what your trees are worth \$\$\$

**Ph: Paul**  
027 630 9922 or email: paulflems@gmail.com

**COASTAL STOPPERS.** Phone Glenn 027 524 5745

**CARPETS** second hand, large selection After Disaster Ltd 223 Devon St West, NP. Phone (06) 769 9265

**HCL BUILDERS** for alterations. Ph 027 236 7129.

*The next issue of the Opunake & Coastal News is due out on December 2, 2021.*

**GIB McNEIL DECORATING** – for all your painting and decorating. Ph: Jason McNeil 027 233 4584.

**HCL BUILDERS** for building houses. Ph 027 236 7129.

**WANTED TO BUY**

**SCRAP METAL** - for all scrap metal Taranaki wide, give us a call. Molten Metals (06) 751 5367. www.moltenmetals.co.nz

**Te Kāhui o Taranaki Trust**

**Notice of 2021 Annual General Meeting**

The Annual General Meeting of Te Kāhui o Taranaki Trust will be held on Saturday 11th December 2021. Due to the uncertainty around Covid-19, we have decided to move this year's Annual General Meeting online with the livestream commencing at 10.00am.

**AGENDA**

- |  |                           |
|--|---------------------------|
| 1. Karakia                                       | 6. Appointment of Auditor |
| 2. Apologies                                     | 7. Trustee Remuneration   |
| 3. Minutes of 2020 Te Kāhui o Taranaki Trust AGM | 8. Annual Goals           |
| 4. Chairperson Report                            | 9. General Business       |
| 5. Audited Financial Reports                     |                           |

The livestream will be protected so that only registered members of Te Kāhui o Taranaki Trust and their whānau can access it.

If you wish to participate via the livestream you will need to register so a link can be sent to you. To register for the livestream link or for further information including copies of documents to be presented at the AGM please contact Te Kāhui o Taranaki Trust office, 1 Young Street, New Plymouth, Ph 0800 83 52484/(06) 751 4285 or via email: events@taranaki.iwi.nz

Leanne Horo  
Chairperson  
www.taranaki.iwi.nz



Next Meeting is on  
December 6, 2021  
at 5.30pm

**Hughsons & Associates**  
Boardroom at the  
Opunake Business Centre,  
23 Napier St, Opunake  
(opposite the Coastal Care  
Medical Centre)

**SITUATIONS VACANT**

**WHAT'S YOUR REASON?**

Time with my mates.

careers.anzcofoods.com



**Seasonal Process Workers**

Guess what? We've got something for you - something that'll help you get the things you want. Maybe that's new rugby boots for the kids, or some extra cash to make this Christmas extra awesome. Whatever your reason, we've got the job for you this season.

Right now we've got heaps of options for working with us. And the best part is you don't even need experience to join us. We're hiring for Butchers, Boners, Labourers and Meat Packers. The crew here at Eltham are legends, and they'll teach you everything you need to know to smash out the work and build up some handy-as skills.

We reckon you'll enjoy it here. We put the hard yards in, but we have fun doing it. So if you like a few laughs with a team who've got each other's backs, you'll fit right in.

Speaking of fit...you'll need to be! And reliability is another big one for us. It's important that you show up when you're meant to, keen to get stuck in. It helps everyone succeed.

So, what do you say - keen on some good money, a great crew and being part of a business that can take you places...if that's your thing? Sweet - get in touch and let's turn those reasons for working into a reality.

Go to **careers.anzcofoods.com** and see what we're all about.



**SITUATIONS VACANT**

**MALE TETRAPLEGIC** requires caregiver for evenings and mornings. Training will be provided. Must be fit. Ph Wayne Chapman, 06 763 8323 or 027 345 7587.

**RAFFLE RESULTS**

**ST BARNABAS RAFFLES**

Opunake Street Market  
Ticket 20B Bird Box Ali Haywood.  
Ticket 34E Basket of mixed items Robyn Chard.

This newspaper is subject to NZ Press Council procedures. A complaint must first be directed in writing within one month of publication to the Opunake & Coastal News email address. If not satisfied with the response, the complaint may be referred to the Press Council, PO Box 10879, The Terrace, Wellington 6143. Or use the online complaint form at www.presscouncil.org.nz. Please include copies of the article and all correspondence with the publication.

**BARBWIRE FENCES**  
Available to do:  
*Landscaping, farm fences, house cleaning, house maintenance and all fencing work*  
Ph James: 027 469 2912

**CALL OUR FRIENDLY SALES TEAM AT THE**



**OPUNAKE & COASTAL NEWS**

23 Napier St, Opunake

06 761 7016

See how our high readership rate can work for you

# meritcars

## with distinction

VISIT WEBSITE [MERITCARS.CO.NZ](http://MERITCARS.CO.NZ)

493 DEVON STREET EAST, STRANDON, NEW PLYMOUTH  
CALL US TODAY 06 281 1925

# FROM \$0 DEPOSIT FINANCE T.A.P.

ALL ON ROAD COSTS INCLUDED PLUS TANK OF FUEL. ONE STOP SHOP FOR FINANCE, WARRANTIES & FREE SMILES

**2011 VOLKSWAGEN TIGUAN TSI**  
6 Speed Excellent Condition Suv Excellent Economy  
6 Speed, Climate Control Aircon, Cd Player/Bt Phone,  
Abs Brakes, 10 X Airbags, Alloy Wheels, Vehicle Stability Control  
**LOW KMS \$14,995**



**2017 FIAT 500X SUV 6SP NZ NEW LOW KMS**  
NZ NEW, 6 Speed Manual , Intercooled Turbo, Multi Airbags,  
Climate Control Air Conditioning, Power Windows & Mirrors,  
ABS Brakes, Stability Control, Reverse Camera, Alloy Wheels,  
Remote Central Locking, Cruise Control, Parking Sonar,  
Engine Autostop, Rear Spoiler, Stereo with USB Aux & BT. 60km  
**ONLY \$18,995**



**2013 FORD KUGA TITANIUM 4WD**  
2.5 Turbo 5 Cylinder Automatic 5 Stage Tiptronic, Duratec,  
Power Steering, Climate Control Air Con, ABS Brakes, Airbags x 6,  
Cruise Control, Leather Trim, Alloy Wheels, Stability Control,  
Tinted Windows, Driving Lights 50km  
**ONLY \$22,995**



**2011 MAZDA AXELA SPORTS**  
2.0 Auto, Higrade  
61km

**NOW \$14,995**



12 AXELA SPORTS IN BLACK:  
1.5 Auto 81km ARRIVING

**2008 HONDA ELYSION VG 8 SEATER**  
Beautiful Hi Spec Example. Auto, QuadCam, 24 Valve,  
Vtec, V6, Alloy Wheels, 8 Seater, Bodykit, Headphone Sets for Rear  
Passengers. 74km

**ONLY \$13,995**



**WE ARE YOUR ONE STOP SHOP FOR QUALITY  
VEHICLES FINANCE AND INSURANCE FROM  
ZERO DEPOSIT AND ALL ON ROAD COSTS  
INCLUDED IN PRICE  
THIS WEEKS SPECIAL**

**2018 HOLDEN CAPTIVA LS EQUIPE 2.4P 7 SEATER:**  
NEW 7 SEATER SUV, NZ NEW, Tiptronic Automatic, Stability Control, Multi  
Airbags, ABS Brakes, Cruise Control, Stereo With B/Tooth USB & AUX, Electric  
Sunroof, Keyless Entry & Start, Front & Rear Aircon, Daytime Running Lights,  
Driving Lights, Auto Lights, Alloys, Leather Trim, Electric Drivers Seat Adjust,  
Electric Windows, 7 Seater, Reverse Camera & rear Parking Sonar. 62KM

**ONLY \$25,995**



**2010 TOYOTA MARK X ZIO  
7 SEATER LOW KMS:**  
2.4 6 Stage Tiptronic, Automatic, Stability  
Control, Keyless Entry, Push Button  
Start, Dual Climate Aircon, CD  
Player/Backing Camera, Multi Airbags,  
Driving Lights, 18" Alloy Wheels 76km

**\$12995**



**2006 HONDA ODYSSEY ABSOLUTE**  
2.4 Automatic, Climate Aircon, Cruise  
Control, ABS Brakes, Dual Airbags, Partial  
Leather Trim, Driving Lights, Tinted  
Windows, Alloy Wheels 131km ONLY

**\$6995**



**2013 SUZUKI SWIFT DDIS**  
DIESEL 5 SPEED  
68km, Cheap to run

**ONLY \$11995**



**2004 SUZUKI SWIFT SPORT 1.5**  
5 speed, ABS Brakes, Dual Airbags, Central  
Locking, Electric Windows, NZ Stereo, Alloy  
Wheels, Body Kit, Spoiler,  
Recaro Seats, Tinted Windows

**ONLY \$4995**



**2011 SUBARU EXIGA 7 SEATER**  
2.0 Tiptronic Auto, Remote Central Locking,  
Driving Lights, Electronic Stability Control,  
Rear Spoiler, Tinted Windows, 40km

**ONLY \$10995**



**2008 MAZDA DEMIO 1.5 5 SPEED**  
Double Overhead Cam, 16 Valve, Variable Valve Timing, Electronic  
Fuel Injection, Power Steering, Power Windows & Mirrors,  
Central Locking, Air Con, CD Player, ABS Brakes, Air Bags,  
Tinted Windows, Driving Lights, 17" Alloy Wheels.

**ONLY \$7,995**



10 Demio  
1.3 Auto  
BARGAIN  
PRICE \$8,995

**2011 SUZUKI SWIFT GLXA NZ NEW**  
N Z NEW Automatic, Variable Valve Timing, Electronic Fuel Injection,  
Power Steering, Power Windows & Mirrors, Central Locking,  
Climate Control Air Con, CD Player, ABS Brakes, Dual Airbags,  
Electronic Stability Control

**ONLY \$8,995**



VEHICLES ARRIVING DAILY - SEE ONSITE SPECIALS FROM \$3,000  
OR VISIT [MERITCARS.CO.NZ](http://MERITCARS.CO.NZ)

**GRAB  
A BARGAIN**



**LOCALLY OWNED & OPERATED**

Ph 06 281 1925 • Chris Elliot 027 471 5972

Ph 06 757 3585 • Paul Butler 027 449 5382